

SAG Polyclonal Antibody



Catalog Number: 161408

Product name

SAG Polyclonal Antibody

Specificity

Mouse, Rat

Antibody description

Polyclonal antibody to SAG

Preparation

Antigen: Recombinant fusion protein containing a sequence corresponding to amino acids 1-405 of human SAG (NP_000532.2).

Formulation

PBS with 0.02% sodium azide, 50% glycerol, pH7.3.

Storage

Store at -20°C. Avoid freeze / thaw cycles.

Clonality

Polyclonal

Ig Type

Rabbit IgG

Applications

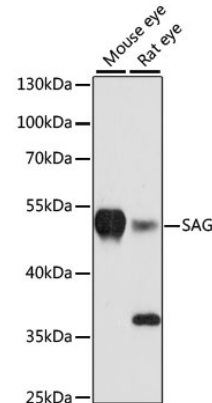
WB, IHC

Dilutions

WB 1:1000 - 1:2000

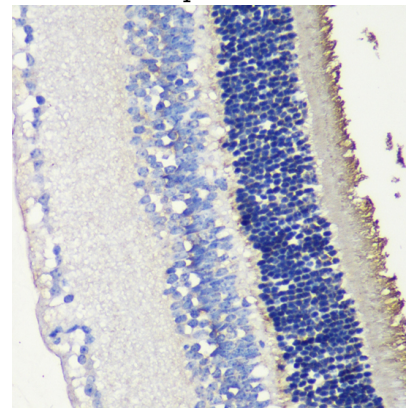
IHC 1:50 - 1:200

Validations



Western blot - SAG Polyclonal Antibody

Western blot analysis of extracts of various cell lines, using SAG antibody at 1:3000 dilution. Secondary antibody: HRP Goat Anti-Rabbit IgG (H+L) at 1:10000 dilution. Lysates/proteins: 25ug per lane. Blocking buffer: 3% nonfat dry milk in TBST. Detection: ECL Basic Kit. Exposure time: 90s.



Immunohistochemistry - SAG Polyclonal Antibody

Immunohistochemistry of paraffin-embedded mouse retina using SAG antibody at dilution of 1:200 (40x lens).