

# ERCC2 antibody

Catalog Number: 110408

## Product name

ERCC2 antibody

IP: 1:200-1:2000

IHC: 1:20-1:200

## Specificity

Human; other species not tested.

## Antibody description

ERCC2 Rabbit Polyclonal antibody. Positive IHC detected in human lymphoma tissue, human cervical cancer tissue. Positive IP detected in K-562 cells. Positive WB detected in HeLa cells, HEK-293 cells, K-562 cells. Observed molecular weight by Western-blot: 80 kDa

## Preparation

This antibody was obtained by immunization of ERCC2 recombinant protein (Accession Number: BC008346). Purification method: Antigen affinity purified.

## Formulation

PBS with 0.1% sodium azide and 50% glycerol pH 7.3.

## Storage

Store at -20°C. DO NOT ALIQUOT

## Clonality

Polyclonal

## Ig Type

Rabbit IgG

## Applications

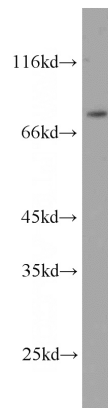
ELISA, WB, IHC, IP

## Dilutions

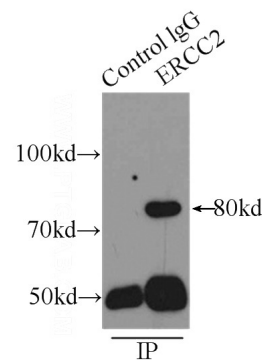
Recommended Dilution:

WB: 1:200-1:2000

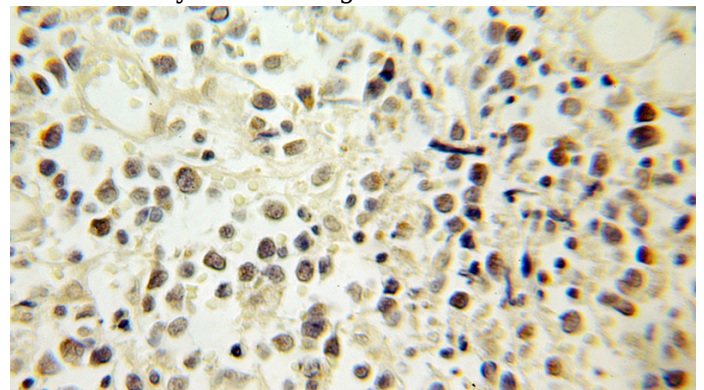
## Validations



HeLa cells were subjected to SDS PAGE followed by western blot with Catalog No:110408(ERCC2 antibody) at dilution of 1:500



IP Result of anti-ERCC2 (IP:Catalog No:110408, 5ug; Detection:Catalog No:110408 1:500) with K-562 cells lysate 8000ug.



Immunohistochemical of paraffin-embedded human lymphoma using Catalog

# ERCC2 antibody



Catalog Number: 110408

---

No:110408(ERCC2 antibody) at dilution of 1:100 (under 10x lens)