

# ADH7 antibody

Catalog Number: 107790

## Product name

ADH7 antibody

IHC: 1:20-1:200

IF: 1:20-1:200

## Specificity

Human; other species not tested.

## Antibody description

ADH7 Rabbit Polyclonal antibody. Positive WB detected in HeLa cells, A549 cells, HEK-293 cells. Positive IF detected in HepG2 cells. Positive IHC detected in human liver tissue. Observed molecular weight by Western-blot: 45-47 kDa

## Preparation

This antibody was obtained by immunization of ADH7 recombinant protein (Accession Number: BC131512). Purification method: Antigen affinity purified.

## Formulation

PBS with 0.02% sodium azide and 50% glycerol pH 7.3.

## Storage

Store at -20°C. DO NOT ALIQUOT

## Clonality

Polyclonal

## Ig Type

Rabbit IgG

## Applications

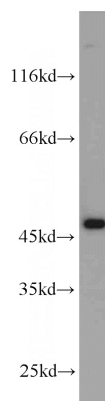
ELISA, WB, IF, IHC

## Dilutions

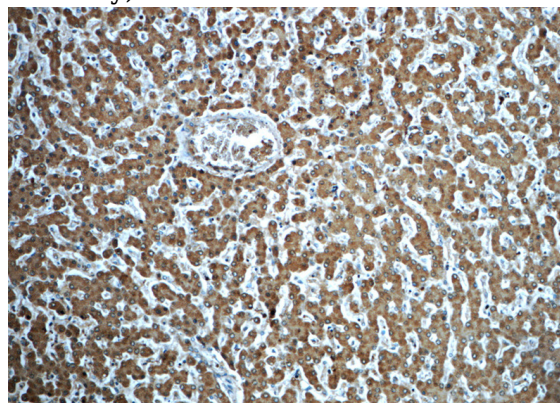
Recommended Dilution:

WB: 1:500-1:5000

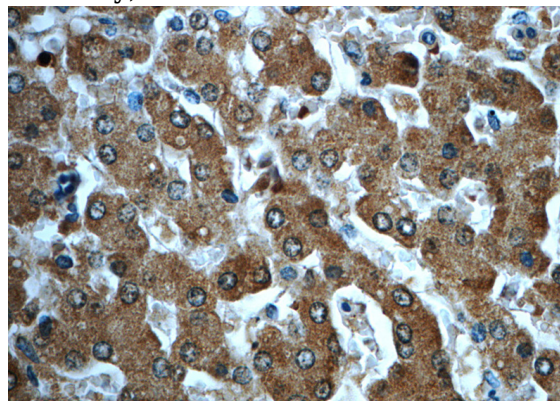
## Validations



HeLa cells were subjected to SDS PAGE followed by western blot with Catalog No:107790(ADH7 antibody) at dilution of 1:1000



Immunohistochemistry of paraffin-embedded human liver slide using Catalog No:107790(ADH7 Antibody) at dilution of 1:50



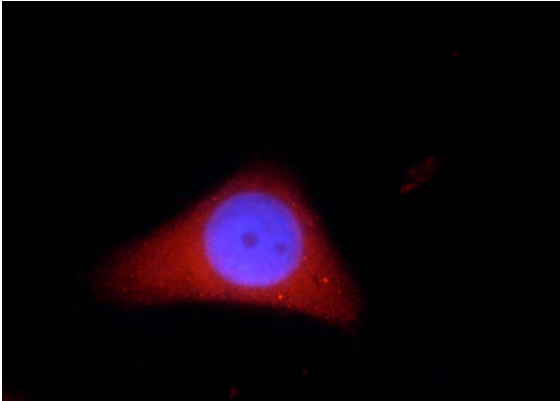
Immunohistochemistry of paraffin-embedded human liver slide using Catalog No:107790(ADH7

# ADH7 antibody

Catalog Number: 107790

---

Antibody) at dilution of 1:50



Immunofluorescent analysis of HepG2 cells, using ADH7 antibody Catalog No:107790 at 1:50 dilution and Rhodamine-labeled goat anti-rabbit IgG (red). Blue pseudocolor = DAPI (fluorescent DNA dye).