

# Anti-NSE Rabbit antibody

Catalog Number: 167390

## Product name

Anti-NSE Rabbit antibody

## Specificity

Human, Mouse, Rat

## Antibody description

NSE Rabbit polyclonal antibody

## Preparation

Antigen: A synthesized peptide derived from human NSE

## Formulation

Rabbit IgG in phosphate buffered saline , pH 7.4, 150mM NaCl, 0.02% sodium azide and 50% glycerol.

## Storage

Store at 4°C short term. Store at -20°C long term. Avoid freeze / thaw cycle.

## Clonality

Polyclonal

## Ig Type

Rabbit IgG

## Applications

WB, IHC-P, ICC/IF, FC

## Dilutions

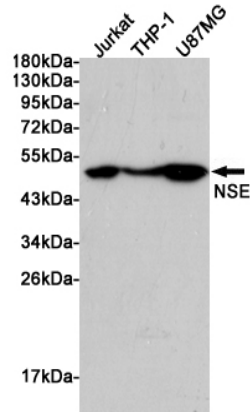
WB: 1/5000-1/10000

IHC: 1/50-1/200

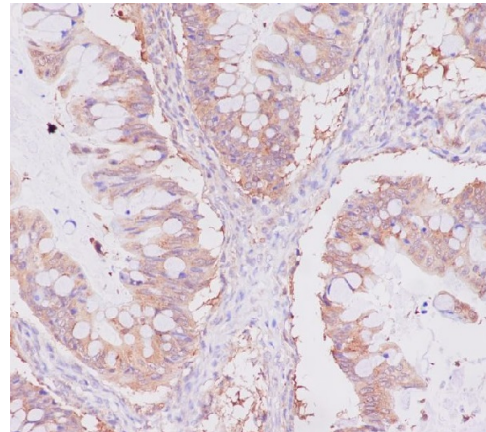
ICC/IF: 1/50-1/200

FC: 1/50

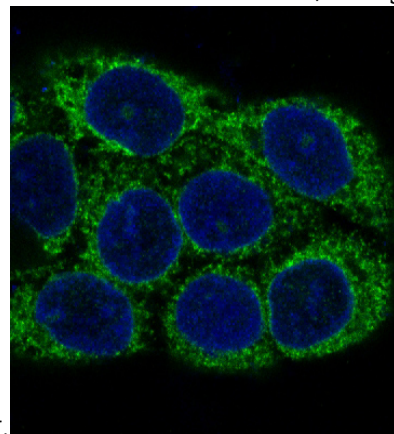
## Validations



Western blot analysis of extracts from Jurkat, THP-1 and U87MG cells using NSE Rabbit pAb at 1:1000 dilution. Predicted band size: 47kDa. Observed band size: 47kDa.



Immunohistochemical analysis of paraffin-embedded human uterus cancer, using NSE



Antibody.

Immunofluorescent analysis of A431 cells, using

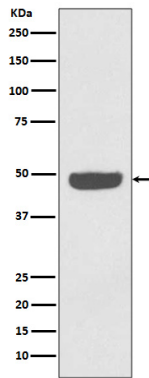
# Anti-NSE Rabbit antibody



Catalog Number: 167390

---

Western blot analysis of NSE expression in HeLa cell lysate.



NSE Antibody.