

# SMMHC antibody



Catalog Number: 115390

## Product name

SMMHC antibody

## Specificity

Human, Mouse, Rat; other species not tested.

## Antibody description

SMMHC Rabbit Polyclonal antibody. Positive WB detected in mouse colon tissue, mouse bladder tissue, mouse uterus tissue, rat uterus tissue. Observed molecular weight by Western-blot: 227kd

## Preparation

This antibody was obtained by immunization of SMMHC recombinant protein (Accession Number: NM\_022844). Purification method: Antigen affinity purified.

## Formulation

PBS with 0.02% sodium azide and 50% glycerol pH 7.3.

## Storage

Store at -20°C. DO NOT ALIQUOT

## Clonality

Polyclonal

## Ig Type

Rabbit IgG

## Applications

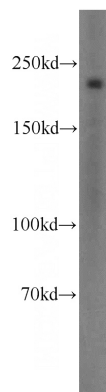
ELISA, WB

## Dilutions

Recommended Dilution:

WB: 1:1000-1:10000

## Validations



mouse colon tissue were subjected to SDS PAGE followed by western blot with Catalog No:115390(MYH11 antibody) at dilution of 1:400