

PSMC3 antibody

Catalog Number: 114390

Product name

PSMC3 antibody

Specificity

Human; other species not tested.

Antibody description

PSMC3 Rabbit Polyclonal antibody. Positive IHC detected in human ovary tumor tissue, human tonsillitis tissue. Positive IF detected in HEK-293 cells, HepG2 cells. Positive WB detected in HeLa cells, A431 cells, HEK-293 cells, HepG2 cells, Jurkat cells, MCF7 cells. Positive IP detected in HeLa cells. Observed molecular weight by Western-blot: 49 kDa

Preparation

This antibody was obtained by immunization of PSMC3 recombinant protein (Accession Number: NM_002804). Purification method: Antigen Affinity purified.

Formulation

PBS with 0.02% sodium azide and 50% glycerol pH 7.3.

Storage

Store at -20°C. DO NOT ALIQUOT

Clonality

Polyclonal

Ig Type

Rabbit IgG

Applications

ELISA, WB, IF, IHC, IP

Dilutions

Recommended Dilution:

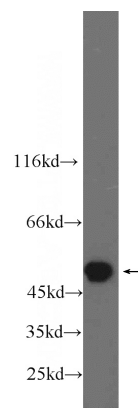
WB: 1:500-1:5000

IP: 1:200-1:2000

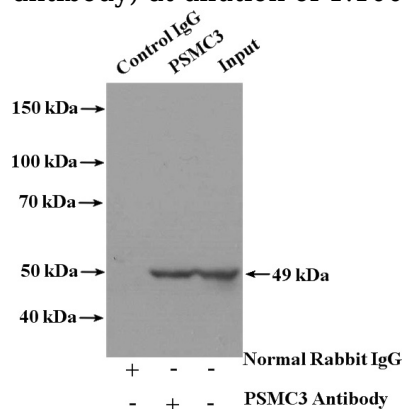
IHC: 1:20-1:200

IF: 1:10-1:100

Validations



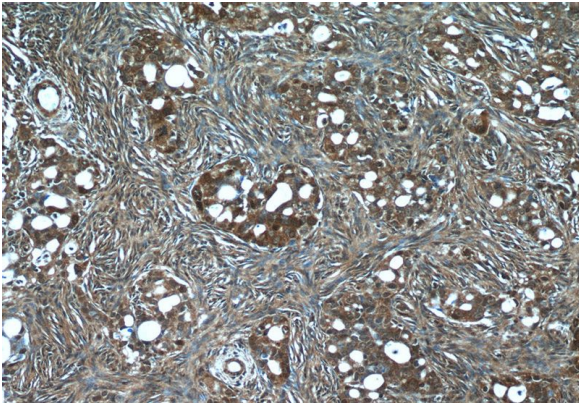
HeLa cells were subjected to SDS PAGE followed by western blot with Catalog No:114390(PSMC3 antibody) at dilution of 1:1000



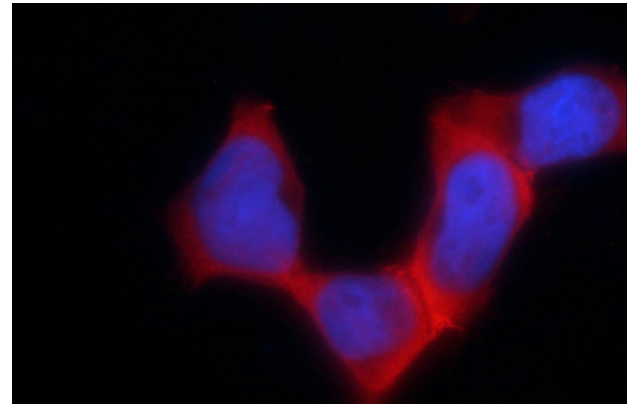
IP Result of anti-PSMC3 (IP:Catalog No:114390, 4ug; Detection:Catalog No:114390 1:800) with HeLa cells lysate 3200ug.

PSMC3 antibody

Catalog Number: 114390



Immunohistochemistry of paraffin-embedded human ovary tumor tissue slide using Catalog No:114390(PSMC3 Antibody) at dilution of 1:50 (under 40x lens)



Immunofluorescent analysis of HEK-293 cells using Catalog No:114390(PSMC3 Antibody) at dilution of 1:25 and Rhodamine-Goat anti-Rabbit IgG

Immunohistochemistry of paraffin-embedded human ovary tumor tissue slide using Catalog No:114390(PSMC3 Antibody) at dilution of 1:50 (under 10x lens)

