

MAGED1 antibody



Catalog Number: 112390

Product name

MAGED1 antibody

Immunogen

[Human MAGED1 Recombinant protein \(GST tag\)](#)

Specificity

Human, Mouse, Rat; other species not tested.

Antibody description

MAGED1 Rabbit Polyclonal antibody. Positive IHC detected in human placenta tissue, human skin tissue. Positive IF detected in A549 cells. Positive FC detected in HeLa cells. Positive IP detected in A549 cells. Positive WB detected in A549 cells, HEK-293 cells, mouse placenta tissue. Observed molecular weight by Western-blot: 100 kDa

Preparation

This antibody was obtained by immunization of MAGED1 recombinant protein (Accession Number: NM_001005333). Purification method: Antigen affinity purified.

Formulation

PBS with 0.02% sodium azide and 50% glycerol pH 7.3.

Storage

Store at -20°C. DO NOT ALIQUOT

Clonality

Polyclonal

Ig Type

Rabbit IgG

Applications

ELISA, IHC, IF, IP, WB, FC

Dilutions

Recommended Dilution:

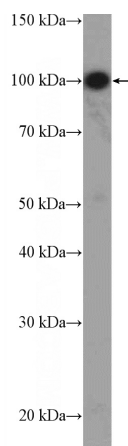
WB: 1:500-1:5000

IP: 1:500-1:5000

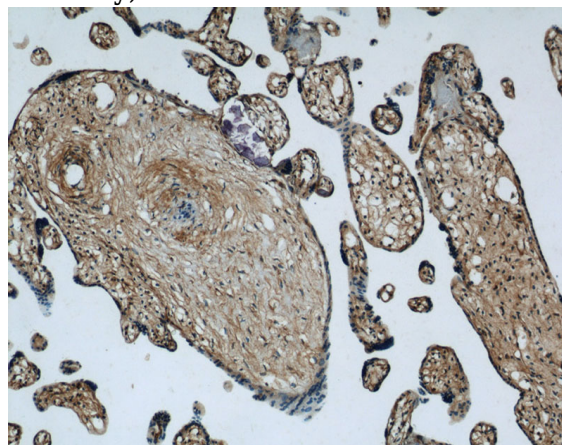
IHC: 1:20-1:200

IF: 1:20-1:200

Validations



A549 cells were subjected to SDS PAGE followed by western blot with Catalog No:112390(MAGED1 Antibody) at dilution of 1:1000

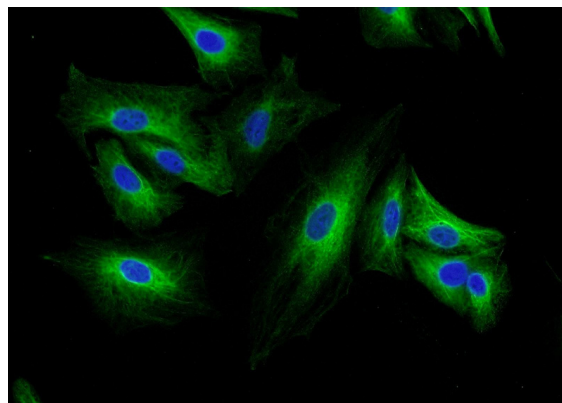
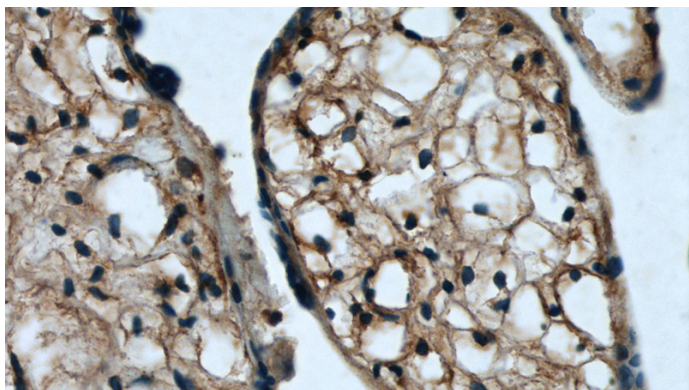


Immunohistochemical of paraffin-embedded human placenta using Catalog No:112390(MAGED1 antibody) at dilution of 1:50 (under 10x lens)

MAGED1 antibody

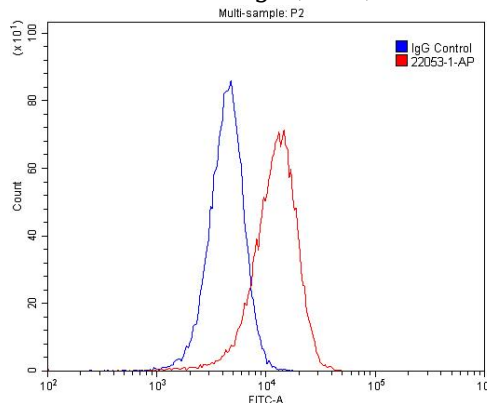
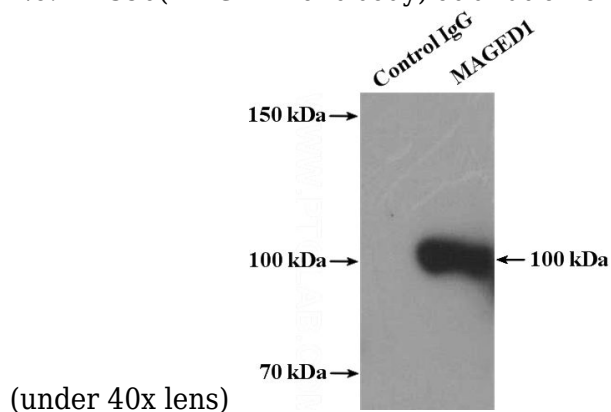


Catalog Number: 112390



Immunohistochemical of paraffin-embedded human placenta using Catalog No:112390(MAGED1 antibody) at dilution of 1:50

Immunofluorescent analysis of A549 cells using Catalog No:112390(MAGED1 Antibody) at dilution of 1:50 and Alexa Fluor 488-conjugated AffiniPure Goat Anti-Rabbit IgG(H+L)



IP Result of anti-MAGED1 (IP:Catalog No:112390, 4ug; Detection:Catalog No:112390 1:1000) with A549 cells lysate 400ug.

1X10⁶ HeLa cells were stained with .2ug MAGED1 antibody (Catalog No:112390, red) and control antibody (blue). Fixed with 4% PFA blocked with 3% BSA (30 min). Alexa Fluor 488-conjugated AffiniPure Goat Anti-Rabbit IgG(H+L) with dilution 1:1500.