

Anti-LRWD1 antibody



Catalog Number: 142390

Product name

Anti-LRWD1 antibody

Specificity

Human LRWD1

Antibody description

Rabbit Polyclonal to Human LRWD1

Preparation

Produced in rabbits immunized with a synthetic peptide corresponding to the center region of the Human LRWD1, and purified by antigen affinity chromatography.

Formulation

0.2 µm filtered solution in PBS

Storage

This antibody can be stored at 2°C-8°C for one month without detectable loss of activity. Antibody products are stable for twelve months from date of receipt when stored at -20°C to -80°C.

Preservative-Free.

Sodium azide is recommended to avoid contamination (final concentration 0.05%-0.1%). It is toxic to cells and should be disposed of properly. Avoid repeated freeze-thaw cycles.

Clonality

Polyclonal

Ig Type

Rabbit IgG

Applications

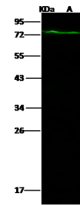
WB, IP

Dilutions

WB: 5-20 µg/ml

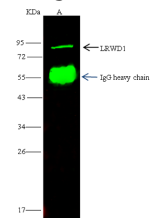
IP: 1-4 µl/mg of lysate

Validations



Lanes		A
Items	Sample	HeLa
	Sample Volume (µg/lane)	30
	Gel	13% SDS-PAGE reducing gel
	Recommended Concentration	5-20 µg/ml
	Secondary Antibody	Dylight 800-labeled Antibody To Rabbit IgG (H+L), at 1:5000 dilution.
Developed using Odyssey imaging system.		
Explanation	Predicted band size : 71 kDa Observed band size : 72 kDa	

LRWD1 Antibody, Rabbit PAb, Antigen Affinity



Lanes		A
Items	Sample	HeLa
	Sample quantity	0.5 mg
	IP antibody quantity	4 µl
	Protein G agarose	15 µl of 50% Protein G agarose
	Gel	13% SDS-PAGE reducing gel
	Primary antibody	KLH-SMCC-SINO212+KLH-SMCC-SINO2721 antibody at 10 µg/ml
	Secondary antibody	Dylight 800-labeled antibody to rabbit IgG (H+L), at 1:5000 dilution

Purified, Western blot

LRWD1 Antibody, Rabbit PAb, Antigen Affinity

Purified, Immunoprecipitation