

HDLBP antibody

Catalog Number: 111390

Product name

HDLBP antibody

IP: 1:200-1:2000

IF: 1:10-1:100

Specificity

Human, Mouse, Rat; other species not tested.

Antibody description

HDLBP Rabbit Polyclonal antibody. Positive WB detected in NIH/3T3 cells, Jurkat cells. Positive IP detected in Jurkat cells. Positive IF detected in MCF-7 cells. Observed molecular weight by Western-blot: 141kd

Preparation

This antibody was obtained by immunization of HDLBP recombinant protein (Accession Number: XM_011511060). Purification method: Antigen affinity purified.

Formulation

PBS with 0.02% sodium azide and 50% glycerol pH 7.3.

Storage

Store at -20°C. DO NOT ALIQUOT

Clonality

Polyclonal

Ig Type

Rabbit IgG

Applications

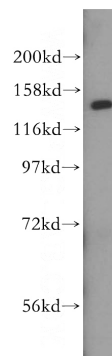
ELISA, WB, IF, IP

Dilutions

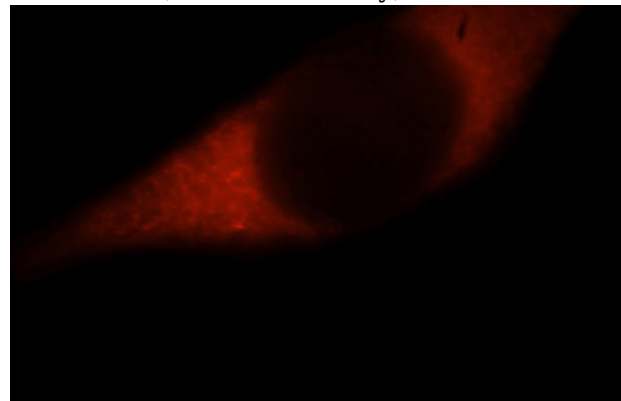
Recommended Dilution:

WB: 1:500-1:5000

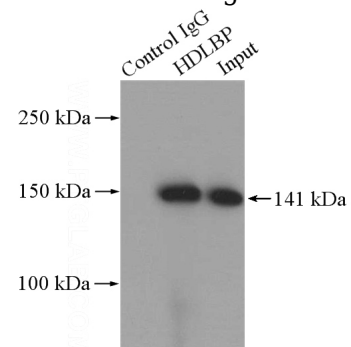
Validations



NIH/3T3 cells were subjected to SDS PAGE followed by western blot with Catalog No:111390(HDLBP antibody) at dilution of 1:500



Immunofluorescent analysis of MCF-7 cells, using HDLBP antibody Catalog No:111390 at 1:25 dilution and Rhodamine-labeled goat anti-rabbit



IgG (red).

IP Result of anti-HDLBP (IP:Catalog No:111390,

HDLBP antibody



Catalog Number: 111390

4ug; Detection:Catalog No:111390 1:500) with Jurkat cells lysate 2400ug.