

Anti-GPR132 antibody



Catalog Number: 176690

Product name

Anti-GPR132 antibody

Specificity

Human, Mouse

Antibody description

Rabbit polyclonal antibody to GPR132

Preparation

This antigen of this antibody was synthetic peptide within n-terminal human gpr132.

Formulation

Liquid, 1*PBS (pH7.4), 0.2% BSA, 40% Glycerol.
Preservative: 0.05% Sodium Azide.

Storage

Store at +4°C after thawing. Aliquot store at -20°C or -80°C. Avoid repeated freeze / thaw cycles.

Clonality

Polyclonal

Ig Type

Rabbit IgG

Applications

WB, ICC

Dilutions

WB: 1:500-1:1,000

ICC: 1:100

Validations

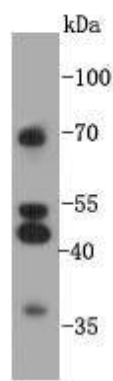


Fig1: Western blot analysis on 293 cell lysates using anti-GPR132 rabbit polyclonal antibodies.

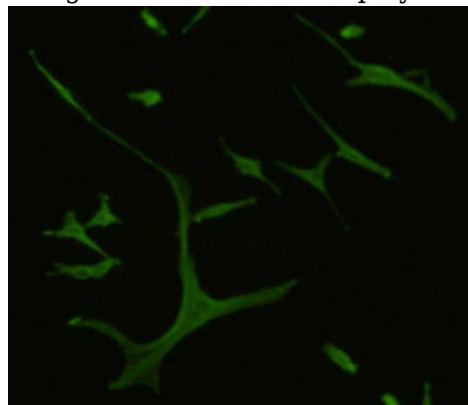


Fig2: Immunofluorescent staining of A172 cells using anti- GPR132 rabbit polyclonal antibody.