

# GAPDH antibody



Catalog Number: 107290

## Product name

GAPDH antibody

## Specificity

Human, Mouse, Rat, Zebrafish, Yeast; other species not tested.

## Antibody description

GAPDH Mouse Monoclonal antibody. Positive WB detected in multi-cells/tissue, arabidopsis whole plant tissue, corn whole plant tissue, HEK-293 cells, HeLa cells, Raji cells, rice whole plant tissue, soybean whole plant tissue, wheat whole plant tissue, whole Nematode tissue, whole yeast cells, zebrafish tissue. Positive IP detected in HeLa Cells. Positive FC detected in HeLa cells. Positive IHC detected in human breast cancer tissue, human kidney tissue. Positive IF detected in Ethacrynic acid treated HeLa cells. Observed molecular weight by Western-blot: 36 kDa

## Preparation

This antibody was obtained by immunization of GAPDH recombinant protein (Accession Number: NM\_001289745). Purification method: Protein A purified.

## Formulation

PBS with 0.1% sodium azide and 50% glycerol pH 7.3.

## Storage

Store at -20°C. DO NOT ALIQUOT

## Clonality

Monoclonal

## Ig Type

Mouse IgG2b

## Applications

ELISA, WB, IF, FC, IP, IHC

## Dilutions

Recommended Dilution:

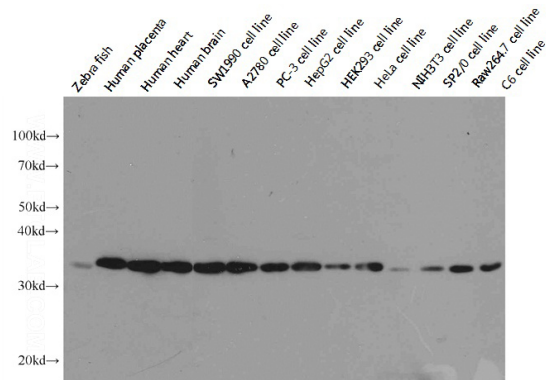
WB: 1:5000-1:20000

IP: 1:3000-1:20000

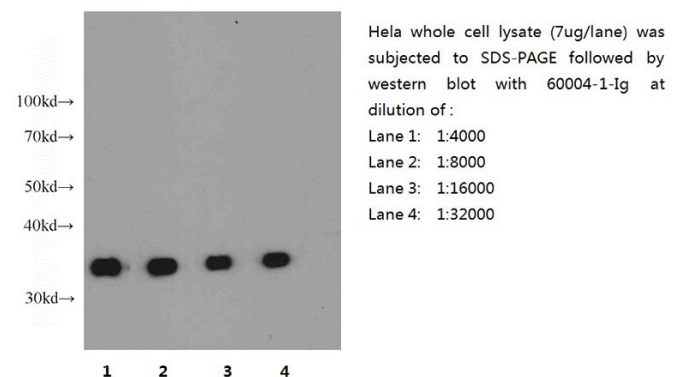
IHC: 1:20-1:200

IF: 1:20-1:200

## Validations



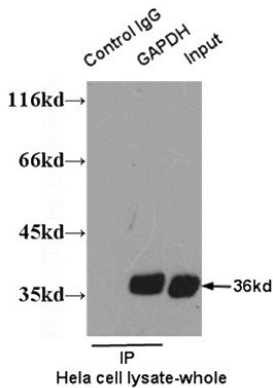
Western blot analysis of GAPDH in various tissues and cell lines using Proteintech antibody Catalog No:117316 at a dilution of 1:10000.



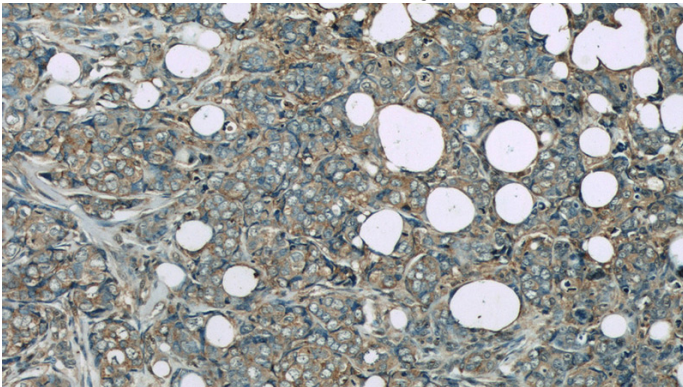
Western blot of HeLa cell with anti-GAPDH (Catalog No:117316) at various dilutions.

# GAPDH antibody

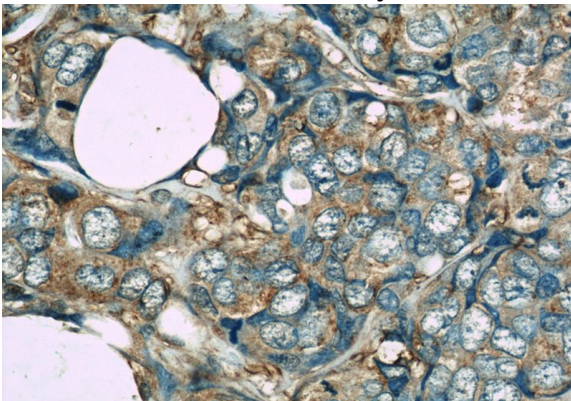
Catalog Number: 107290



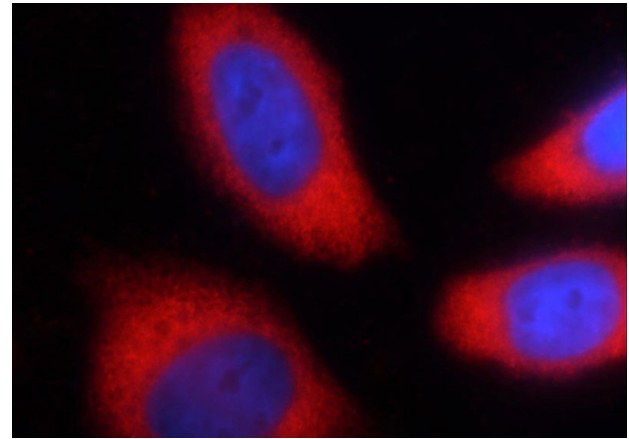
IP result of anti-GAPDH (Catalog No:117316 for IP and Detection) with HeLa cell lysate.



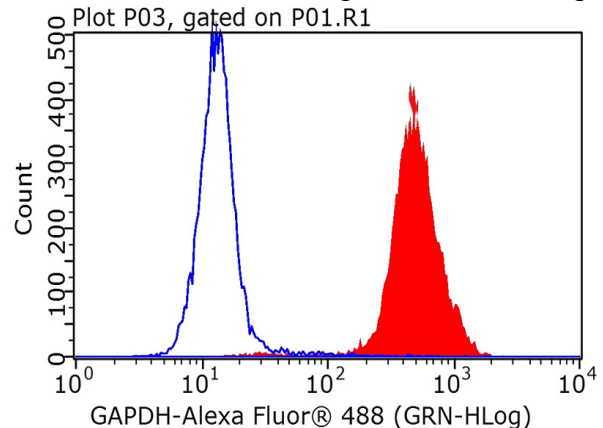
Immunohistochemistry of paraffin-embedded human breast cancer slide using GAPDH antibody (Catalog No:117316) at dilution of 1:50.



Immunohistochemistry of paraffin-embedded human breast cancer slide using GAPDH antibody (Catalog No:117316) at dilution of 1:50.



Immunofluorescent analysis of Ethacrynic acid treated HeLa cells using GAPDH antibody (Catalog No:117316) at dilution of 1:50 and Rhodamine-labeled goat anti-mouse IgG (red).



1X10<sup>6</sup> HeLa cells were stained with 0.2ug GAPDH antibody (Catalog No:117316, red) and control antibody (blue). Fixed with 90% MeOH blocked with 3% BSA (30 min). FITC-Goat anti-Mouse IgG with dilution 1:100.