

DCD Polyclonal Antibody



Catalog Number: 165290

Product name

DCD Polyclonal Antibody

Specificity

Human, Mouse

Antibody description

Polyclonal antibody to DCD

Preparation

Antigen: Recombinant fusion protein containing a sequence corresponding to amino acids 20-110 of human DCD (NP_444513.1).

Formulation

PBS with 0.02% sodium azide, 50% glycerol, pH7.3.

Storage

Store at -20°C. Avoid freeze / thaw cycles.

Clonality

Polyclonal

Ig Type

Rabbit IgG

Applications

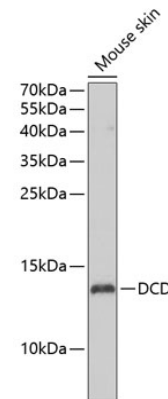
WB, IF

Dilutions

WB 1:500 - 1:2000

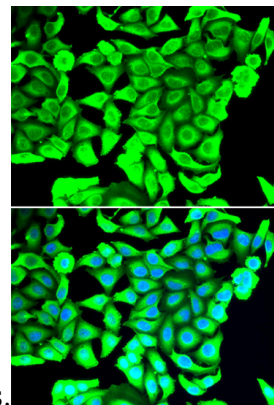
IF 1:50 - 1:100

Validations



Western blot - DCD Polyclonal Antibody

Western blot analysis of extracts of mouse skin, using DCD antibody at 1:1000 dilution. Secondary antibody: HRP Goat Anti-Rabbit IgG (H+L) at 1:10000 dilution. Lysates/proteins: 25ug per lane. Blocking buffer: 3% nonfat dry milk in TBST. Detection: ECL Enhanced Kit. Exposure



time: 5s.

Immunofluorescence - DCD Polyclonal Antibody

Immunofluorescence analysis of MCF-7 cells using DCD antibody. Blue: DAPI for nuclear staining.