

PSAP antibody

Catalog Number: 114290

Product name

PSAP antibody

Specificity

Human, Mouse, Rat; other species not tested.

Antibody description

PSAP Rabbit Polyclonal antibody. Positive WB detected in PC-3 cells, HepG2 cells, L02 cells, MCF7 cells. Positive IHC detected in human prostate cancer tissue, human liver cancer tissue. Observed molecular weight by Western-blot: 58 kDa

Preparation

This antibody was obtained by immunization of PSAP recombinant protein (Accession Number: NM_002778). Purification method: Antigen affinity purified.

Formulation

PBS with 0.02% sodium azide and 50% glycerol pH 7.3.

Storage

Store at -20°C. DO NOT ALIQUOT

Clonality

Polyclonal

Ig Type

Rabbit IgG

Applications

ELISA, WB, IHC

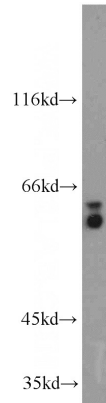
Dilutions

Recommended Dilution:

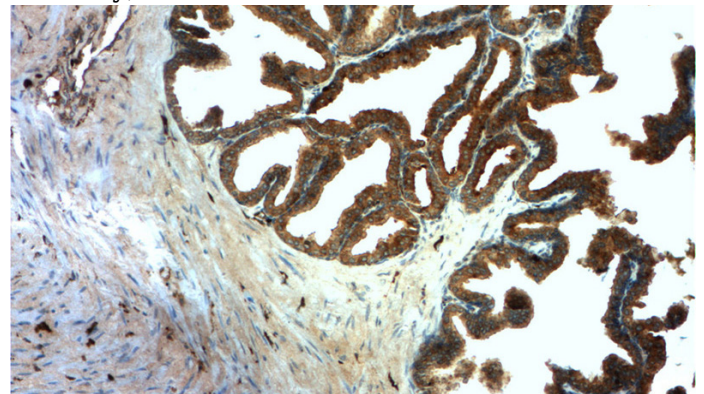
WB: 1:200-1:2000

IHC: 1:20-1:200

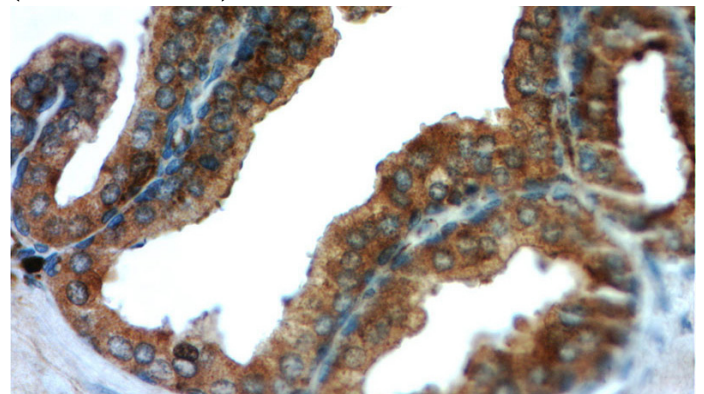
Validations



PC-3 cells were subjected to SDS PAGE followed by western blot with Catalog No:114290(PSAP antibody) at dilution of 1:800



Immunohistochemistry of paraffin-embedded human prostate cancer tissue slide using Catalog No:114290(PSAP Antibody) at dilution of 1:50 (under 10x lens)



Immunohistochemistry of paraffin-embedded human prostate cancer tissue slide using Catalog No:114290(PSAP Antibody) at dilution of 1:50

PSAP antibody



Catalog Number: 114290

(under 40x lens)