

General Information

Gene Name Synonym

Roof plate-specific spondin-1

Protein Construction

A DNA sequence encoding the human RSPO1 (NP_001033722.1) (Met 1-Ala 263)was expressed and purified.

Organism

Human

Expression Host

CHO Cells

QC Testing

Activity

Measured by its ability to induce activation of β catenin response in a Topflash Luciferase assay using HEK293T human embryonic kidney cells. The ED₅₀ for this effect is typically 40-400 ng/mL in the presence of 5 ng/mL recombinant mouse Wnt3a.

Purity

(53.2+43.4) % as determined by SDS-PAGE

Endotoxin

< 1.0 EU per μ g of the protein as determined by the LAL method

Stability

Samples are stable for up to twelve months from date of receipt at -70°C

Predicted N terminal

Ser 21

Molecular Mass

The recombinant human RSPO1 consists of 243 amino acids and has a predicted molecular mass of 26.8 kDa. As a result of glycosylation, the apparent molecular mass of it is approximately 40 and 31 kDa in SDS-PAGE under reducing conditions.

Formulation

Lyophilized from sterile PBS, PH 7.4.

1. 5 % trehalose and mannitol are added as protectants before lyophilization.

2. Please contact us for any concerns or special requirements.

Usage Guide

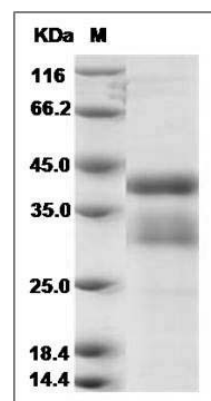
Storage

Store it under sterile conditions at -20°C to -80°C. It is recommended that the protein be aliquoted for optimal storage. Avoid repeated freeze-thaw cycles.

Reconstitution

Adding sterile water, prepare a stock solution of 0.25 mg/ml. Concentration is measured by UV-Vis.

SDS-PAGE



Human R-Spondin 1 / RSPO1 Protein SDS-PAGE