

# Hemopexin antibody



Catalog Number: 111290

## Product name

Hemopexin antibody

## Specificity

Human; other species not tested.

## Antibody description

Hemopexin Rabbit Polyclonal antibody. Positive WB detected in human blood tissue, human placenta tissue. Observed molecular weight by Western-blot: 65-75kd

## Preparation

This antibody was obtained by immunization of Hemopexin recombinant protein (Accession Number: BC005395). Purification method: Antigen affinity purified.

## Formulation

PBS with 0.1% sodium azide and 50% glycerol pH 7.3.

## Storage

Store at -20°C. DO NOT ALIQUOT

## Clonality

Polyclonal

## Ig Type

Rabbit IgG

## Applications

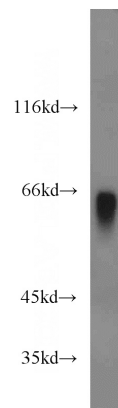
ELISA, WB

## Dilutions

Recommended Dilution:

WB: 1:500-1:5000

## Validations



human blood tissue were subjected to SDS PAGE followed by western blot with Catalog No:111290(HPX antibody) at dilution of 1:2000