

CCDC85B antibody



Catalog Number: 108990

Product name

CCDC85B antibody

IP: 1:200-1:1000

IF: 1:50-1:500

Specificity

Human, Mouse; other species not tested.

Antibody description

CCDC85B Rabbit Polyclonal antibody. Positive IP detected in mouse heart tissue. Positive WB detected in mouse heart tissue, mouse lung tissue. Positive IF detected in HeLa cells. Observed molecular weight by Western-blot: 24-28 kDa

Preparation

This antibody was obtained by immunization of CCDC85B recombinant protein (Accession Number: NM_006848). Purification method: Antigen affinity purified.

Formulation

PBS with 0.1% sodium azide and 50% glycerol pH 7.3.

Storage

Store at -20°C. DO NOT ALIQUOT

Clonality

Polyclonal

Ig Type

Rabbit IgG

Applications

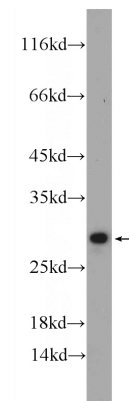
ELISA, WB, IF, IP

Dilutions

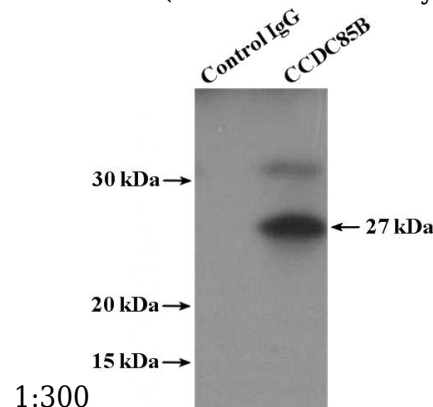
Recommended Dilution:

WB: 1:200-1:1000

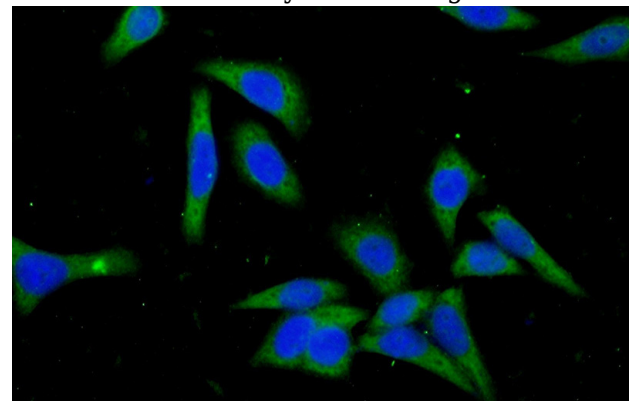
Validations



mouse heart tissue were subjected to SDS PAGE followed by western blot with Catalog No:108990(CCDC85B Antibody) at dilution of



IP Result of anti-CCDC85B (IP:Catalog No:108990, 4ug; Detection:Catalog No:108990 1:300) with mouse heart tissue lysate 3600ug.



Immunofluorescent analysis of (-20oc Ethanol)

CCDC85B antibody



Catalog Number: 108990

fixed HeLa cells using Catalog
No:108990(CCDC85B Antibody) at dilution of 1:50

and Alexa Fluor 488-conjugated AffiniPure Goat
Anti-Rabbit IgG(H+L)