

XLF antibody

Catalog Number: 116990

Product name

XLF antibody

Specificity

Human; other species not tested.

Antibody description

XLF Rabbit Polyclonal antibody. Positive WB detected in human small intestine tissue. Observed molecular weight by Western-blot: 33kd

Preparation

This antibody was obtained by immunization of XLF recombinant protein (Accession Number: NM_001377498). Purification method: Antigen affinity purified.

Formulation

PBS with 0.1% sodium azide and 50% glycerol pH 7.3.

Storage

Store at -20°C. DO NOT ALIQUOT

Clonality

Polyclonal

Ig Type

Rabbit IgG

Applications

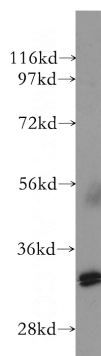
ELISA, WB

Dilutions

Recommended Dilution:

WB: 1:200-1:2000

Validations



human small intestine tissue were subjected to SDS PAGE followed by western blot with Catalog No:116990(NHEJ1 antibody) at dilution of 1:300