

# SCEL antibody

Catalog Number: 114990

## Product name

SCEL antibody

WB: 1:200-1:2000

IHC: 1:20-1:200

## Specificity

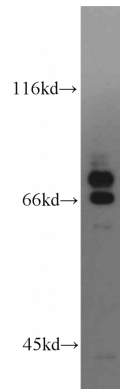
Human; other species not tested.

IF: 1:10-1:100

## Antibody description

SCEL Rabbit Polyclonal antibody. Positive WB detected in A431 cells, human skin tissue. Positive FC detected in HeLa cells. Positive IF detected in HepG2 cells. Positive IHC detected in human cervical cancer tissue, human lung cancer tissue. Observed molecular weight by Western-blot: 70-78 kDa

## Validations



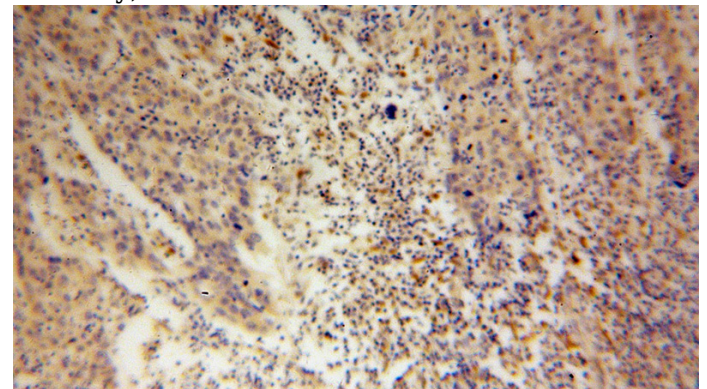
## Preparation

This antibody was obtained by immunization of SCEL recombinant protein (Accession Number: BC020726). Purification method: Antigen affinity purified.

A431 cells were subjected to SDS PAGE followed by western blot with Catalog No:114990(SCEL antibody) at dilution of 1:300

## Formulation

PBS with 0.1% sodium azide and 50% glycerol pH 7.3.



## Storage

Store at -20°C. DO NOT ALIQUOT

## Clonality

Polyclonal

Immunohistochemical of paraffin-embedded human cervical cancer using Catalog No:114990(SCEL antibody) at dilution of 1:100 (under 10x lens)

## Ig Type

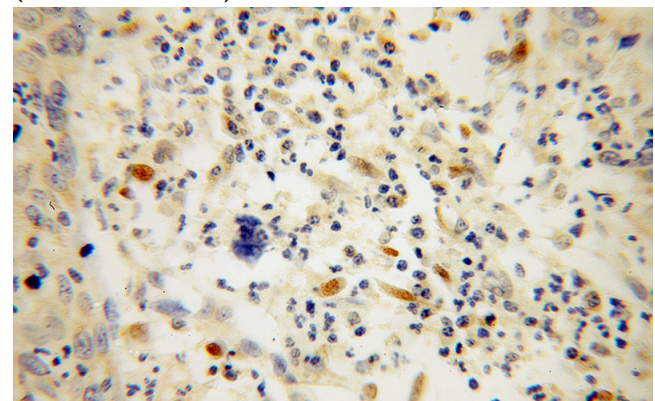
Rabbit IgG

## Applications

ELISA, WB, IHC, IF, FC

## Dilutions

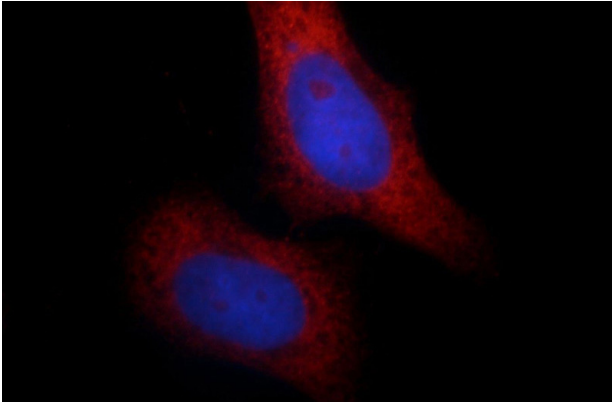
Recommended Dilution:



# SCEL antibody

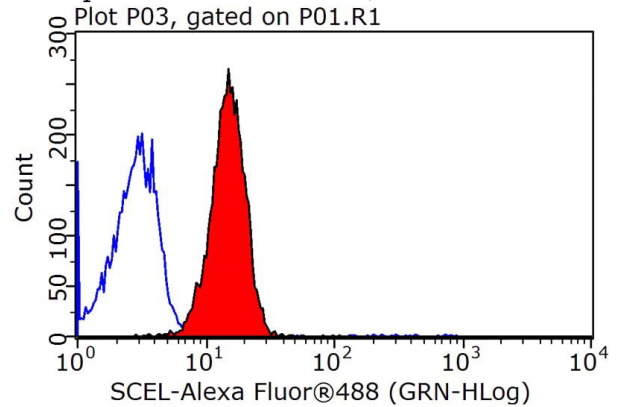
Catalog Number: 114990

Immunohistochemical of paraffin-embedded human cervical cancer using Catalog No:114990(SCEL antibody) at dilution of 1:100 (under 40x lens)



Immunofluorescent analysis of HepG2 cells, using SCEL antibody Catalog No:114990 at 1:25 dilution and Rhodamine-labeled goat anti-rabbit IgG (red).

Blue pseudocolor = DAPI (fluorescent DNA dye).



$1 \times 10^6$  HeLa cells were stained with 0.2ug SCEL antibody (Catalog No:114990, red) and control antibody (blue). Fixed with 90% MeOH blocked with 3% BSA (30 min). Alexa Fluor 488-conjugated AffiniPure Goat Anti-Rabbit IgG(H+L) with dilution 1:1500.