

# KIAA1199 antibody



Catalog Number: 111990

## Product name

KIAA1199 antibody

WB: 1:200-1:2000

IHC: 1:20-1:200

## Specificity

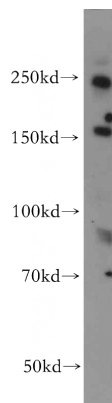
Human, Mouse, Rat; other species not tested.

IF: 1:10-1:100

## Antibody description

KIAA1199 Rabbit Polyclonal antibody. Positive WB detected in human brain tissue, COLO 320 cells. Positive IF detected in HepG2 cells, Hela cells. Positive IHC detected in human stomach cancer tissue, human prostate hyperplasia tissue. Observed molecular weight by Western-blot: 153 kDa

## Validations



## Preparation

This antibody was obtained by immunization of KIAA1199 recombinant protein (Accession Number: BC020256). Purification method: Antigen affinity purified.

human brain tissue were subjected to SDS PAGE followed by western blot with Catalog No:111990(KIAA1199 antibody) at dilution of 1:500

## Formulation

PBS with 0.02% sodium azide and 50% glycerol pH 7.3.

## Storage

Store at -20°C. DO NOT ALIQUOT

## Clonality

Polyclonal

## Ig Type

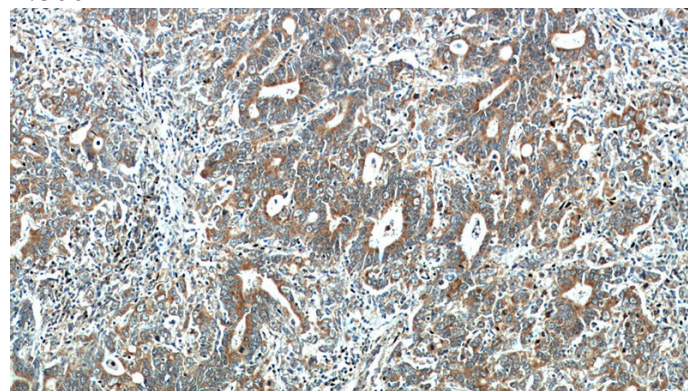
Rabbit IgG

## Applications

ELISA, WB, IHC, IF

## Dilutions

Recommended Dilution:

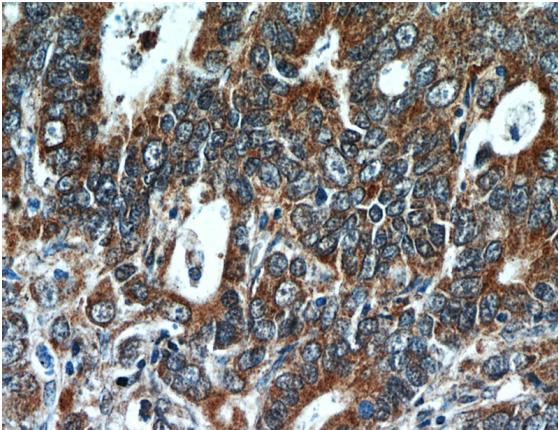


Immunohistochemical of paraffin-embedded human stomach cancer using Catalog No:111990(KIAA1199 antibody) at dilution of 1:50 (under 10x lens)

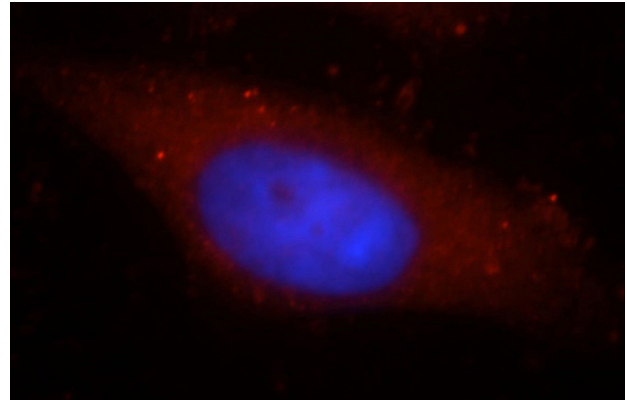
# KIAA1199 antibody

Catalog Number: 111990

---



Immunohistochemical of paraffin-embedded human stomach cancer using Catalog No:111990(KIAA1199 antibody) at dilution of 1:50 (under 40x lens)



Immunofluorescent analysis of HepG2 cells, using KIAA1199 antibody Catalog No:111990 at 1:25 dilution and Rhodamine-labeled goat anti-rabbit IgG (red). Blue pseudocolor = DAPI (fluorescent DNA dye).