

CRYZL1 antibody



Catalog Number: 109590

Product name

CRYZL1 antibody

Specificity

Human, Mouse, Rat, Monkey; other species not tested.

Antibody description

CRYZL1 Rabbit Polyclonal antibody. Positive WB detected in COS-7 cells, MCF-7 cells. Observed molecular weight by Western-blot: 39-45 kDa

Preparation

This antibody was obtained by immunization of CRYZL1 recombinant protein (Accession Number: BC013155). Purification method: Antigen affinity purified.

Formulation

PBS with 0.1% sodium azide and 50% glycerol pH 7.3.

Storage

Store at -20°C. DO NOT ALIQUOT

Clonality

Polyclonal

Ig Type

Rabbit IgG

Applications

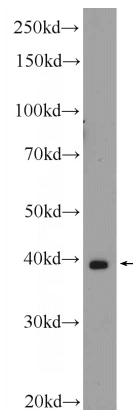
ELISA, WB

Dilutions

Recommended Dilution:

WB: 1:200-1:1000

Validations



COS-7 cells were subjected to SDS PAGE followed by western blot with Catalog No:109590(CRYZL1 Antibody) at dilution of 1:300