

SMARCE1 antibody



Catalog Number: 107590

Product name

SMARCE1 antibody

IHC: 1:20-1:200

IF: 1:20-1:200

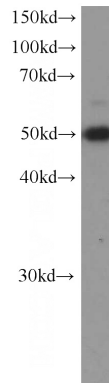
Specificity

Human; other species not tested.

Validations

Antibody description

SMARCE1 Mouse Monoclonal antibody. Positive IHC detected in human breast cancer tissue. Positive IF detected in HEK-293 cells. Positive WB detected in Jurkat cells. Observed molecular weight by Western-blot: 55 kDa



Preparation

This antibody was obtained by immunization of SMARCE1 recombinant protein (Accession Number: NM_003079). Purification method: Protein G purified.

Jurkat cells were subjected to SDS PAGE followed by western blot with Catalog No:107590(SMARCE1 Antibody) at dilution of 1:1000

Formulation

PBS with 0.02% sodium azide and 50% glycerol pH 7.3.

Storage

Store at -20°C. DO NOT ALIQUOT

Clonality

Monoclonal

Ig Type

Mouse IgG1

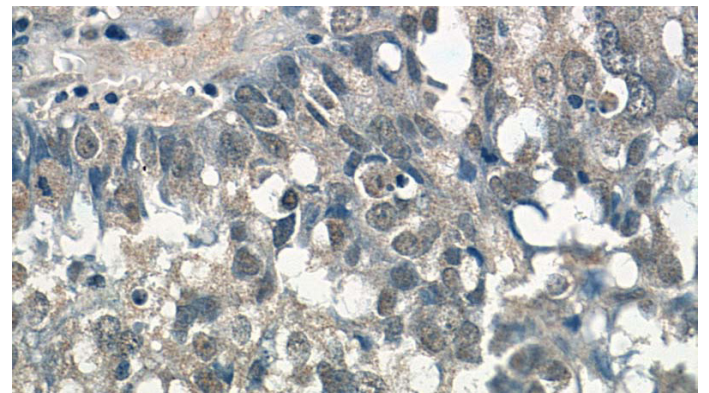
Applications

ELISA, WB, IHC, IF

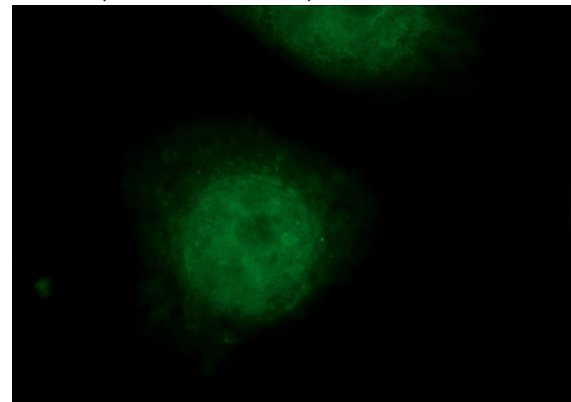
Dilutions

Recommended Dilution:

WB: 1:500-1:5000



Immunohistochemistry of paraffin-embedded human breast cancer tissue slide using Catalog No:107590(SMARCE1 Antibody) at dilution of 1:100 (under 40x lens)



SMARCE1 antibody



Catalog Number: 107590

Immunofluorescent analysis of HEK-293 cells
using Catalog No:107590(SMARCE1 Antibody) at

dilution of 1:50 and Rhodamine-Goat anti-Mouse
IgG