

# CLTC Polyclonal Antibody

Catalog Number: 165590

## Product name

CLTC Polyclonal Antibody

## Specificity

Human, Mouse, Rat

## Antibody description

Polyclonal antibody to CLTC

## Preparation

Antigen: A synthetic peptide of human CLTC

## Formulation

PBS with 0.02% sodium azide, 50% glycerol, pH7.3.

## Storage

Store at -20°C. Avoid freeze / thaw cycles.

## Clonality

Polyclonal

## Ig Type

Rabbit IgG

## Applications

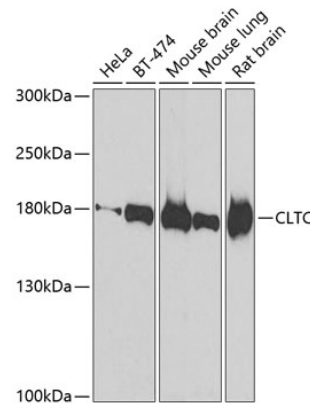
WB, IHC

## Dilutions

WB 1:500 - 1:2000

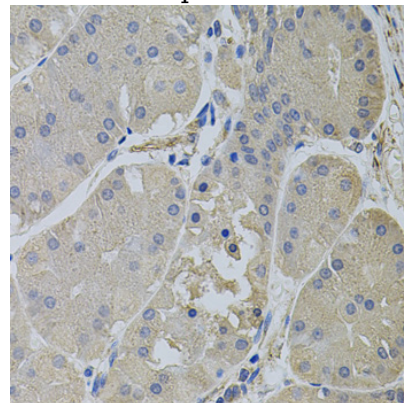
IHC 1:50 - 1:100

## Validations



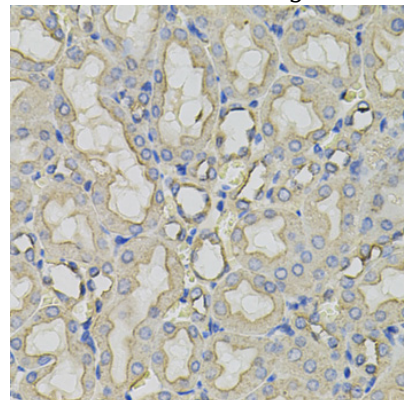
Western blot - CLTC Polyclonal Antibody

Western blot analysis of extracts of various cell lines, using CLTC antibody at 1:500 dilution. Secondary antibody: HRP Goat Anti-Rabbit IgG (H+L) at 1:10000 dilution. Lysates/proteins: 25ug per lane. Blocking buffer: 3% nonfat dry milk in TBST. Detection: ECL Basic Kit. Exposure time: 90s.



Immunohistochemistry - CLTC Polyclonal Antibody

Immunohistochemistry of paraffin-embedded human stomach using CLTC antibody (40x lens).



# CLTC Polyclonal Antibody



Catalog Number: 165590

---

Immunohistochemistry - CLTC Polyclonal Antibody    Immunohistochemistry of paraffin-embedded rat kidney using CLTC antibody (40x lens).