

Human LILRB2 / ILT4 / LIR-2 (Fc Tag) recombinant protein



Catalog Number: 503590

General Information

Gene Name Synonym

CD85 antigen-like family member D;
Immunoglobulin-like transcript 4;
Monocyte/macrophage immunoglobulin-like
receptor 10

Protein Construction

A DNA sequence encoding the human LILRB2
(AAH36827.1) (Met1-Val461) was expressed with
the Fc region of human IgG1 at the C-terminus.

Organism

Human

Expression Host

Human Cells

QC Testing

Activity

Measured by its ability to support the adhesion of
HSB2 human peripheral blood acute
lymphoblastic leukemia cells.

When 8×10^4 cells/well are added to LILRB2
coated plates ($4.4 \mu\text{g/mL}$ with $100 \mu\text{L/well}$),
approximately >45% cells will adhere for 1 hour
incubation at 37°C .

Purity

> 85 % as determined by SDS-PAGE

Endotoxin

< 1.0 EU per μg of the protein as determined by
the LAL method

Stability

Samples are stable for up to twelve months from
date of receipt at -70°C

Predicted N terminal

Gln 22

Molecular Mass

The recombinant human LILRB2/Fc is a disulfide-
linked homodimer. The reduced monomer
comprises 681 amino acids and has a predicted
molecular mass of 74.8 kDa. The apparent
molecular mass of the protein is approximately 93
kDa in SDS-PAGE under reducing conditions.

Formulation

Lyophilized from sterile PBS, pH 7.4.

1. 5 % trehalose and mannitol are added as
protectants before lyophilization.
2. Please contact us for any concerns or special
requirements.

Usage Guide

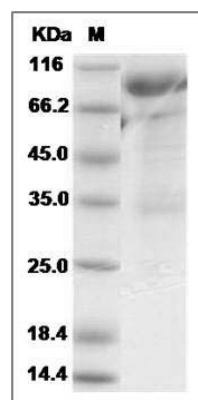
Storage

Store it under sterile conditions at -20°C to -80°C .
It is recommended that the protein be aliquoted
for optimal storage. Avoid repeated freeze-thaw
cycles.

Reconstitution

Adding sterile water, prepare a stock solution of
 0.25 mg/mL . Concentration is measured by UV-Vis.

SDS-PAGE



Human LILRB2 / ILT4 / LIR-2 (Fc Tag) recombinant protein



Catalog Number: 503590

Human LILRB2 / ILT4 / LIR-2 Protein (Fc Tag)

SDS-PAGE