

# Anti-Caspase-8 Rabbit antibody



Catalog Number: 168890

## Product name

Rabbit IgG

Anti-Caspase-8 Rabbit antibody

## Applications

## Specificity

WB, ICC/IF, FC

Human

## Dilutions

## Antibody description

WB: 1/1000

Caspase-8 Rabbit monoclonal antibody

ICC/IF: 1/20

## Preparation

FC: 1/20

Antigen: A synthetic peptide of human Caspase-8

## Validations

## Formulation

50nM Tris-Glycine(pH 7.4), 0.15M NaCl,  
40%Glycerol, 0.01% sodium azide and 0.05% BSA.

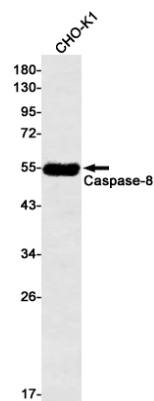
## Storage

Store at 4°C short term. Store at -20°C long term.  
Avoid freeze / thaw cycle.

## Clonality

Monoclonal

## Ig Type



Western blot detection of Caspase-8 in CHO-K1 cell lysates using Caspase-8 Rabbit mAb(1:500 diluted).Predicted band size:55kDa.Observed band size:55kDa.