

# Anti-Renin antibody



Catalog Number: 102490

## Product name

Anti-Renin antibody

## Immunogen

[Mouse Renin \(His Tag\) recombinant protein](#)

## Specificity

Mouse REN1 / Renin-1

**No cross-reactivity** with in ELISA; Mouse Cathepsin D / CTSD

## Antibody description

Rabbit monoclonal to Renin

## Preparation

This antibody was obtained from a rabbit immunized with purified, recombinant Mouse REN1 (rM REN1; NP\_112469.1; Met 1-Arg 402).

## Formulation

0.2 µm filtered solution in PBS with 5% trehalose

## Storage

This antibody can be stored at 2°C-8°C for one month without detectable loss of activity. Antibody products are stable for twelve months from date of receipt when stored at -20°C to -80°C.

Preservative-Free.

Sodium azide is recommended to avoid contamination (final concentration 0.05%-0.1%). It is toxic to cells and should be disposed of properly. Avoid repeated freeze-thaw cycles.

## Clonality

Monoclonal

## Ig Type

Rabbit IgG

## Applications

ELISA, IHC-P

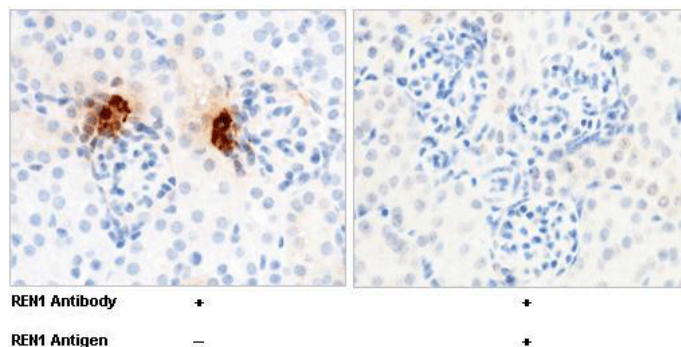
## Dilutions

ELISA: 0.1-0.2 µg/mL

This antibody can be used at 0.1-0.2 µg/mL with the appropriate secondary reagents to detect Mouse REN1. The detection limit for Mouse REN1 is approximately 0.0049 ng/well.

IHC-P: 2-15 µg/mL

## Validations



REN1 / Renin-1 Antibody, Rabbit MAb, Immunohistochemistry

Immunochemical staining of mouse REN1 in mouse kidney with rabbit monoclonal antibody (5 µg/mL, formalin-fixed paraffin embedded sections). Positive staining was localized to juxtaglomerular cell. The left panel: tissue incubated with primary antibody; The right panel: tissue incubated with the mixture of primary antibody and antigen (recombinant protein).