

# Anti-Phospho-p44/42 MAPK (ERK 1/2) (Thr202/Tyr204) Rabbit antibody



Catalog Number: 169090

## Product name

Anti-Phospho-p44/42 MAPK (ERK 1/2)  
(Thr202/Tyr204) Rabbit antibody

## Specificity

Human, Mouse, Rat

## Antibody description

Phospho-p44/42 MAPK (ERK 1/2) (Thr202/Tyr204)  
Rabbit polyclonal antibody

## Preparation

Antigen: Synthesized phospho-peptide around the phosphorylation site of human ERK 1/2 (phospho Thr202/Y204)

## Formulation

Liquid in PBS containing 50% glycerol, 0.5% BSA and 0.02% sodium azide.

## Storage

Store at 4°C short term. Store at -20°C long term. Avoid freeze / thaw cycle.

## Clonality

Polyclonal

## Ig Type

Rabbit IgG

## Applications

ICC/IF, WB, IHC-P, ELISA

## Dilutions

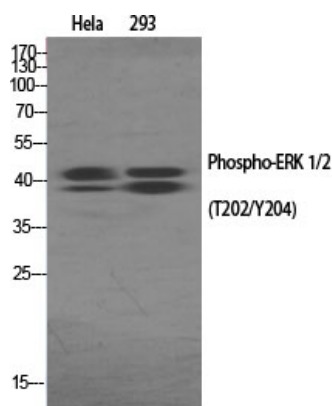
IF: 1/50-200

WB: 1/500 - 1/2000

IHC: 1/100 - 1/300

ELISA: 1/20000

## Validations



Western Blot analysis of various cells using Phospho-ERK 1/2 (T202/Y204) Polyclonal Antibody