

# Annexin A10 antibody



Catalog Number: 108090

## Product name

Annexin A10 antibody

## Specificity

Human, Mouse, Rat; other species not tested.

## Antibody description

Annexin A10 Rabbit Polyclonal antibody. Positive WB detected in Transfected HEK-293 cells. Positive IF detected in MCF-7 cells. Positive IHC detected in human stomach cancer tissue, human brain tissue, human kidney tissue, human lung tissue, human ovary tissue, human placenta tissue, human skin tissue, human spleen tissue, human stomach tissue, human testis tissue.

## Preparation

This antibody was obtained by immunization of Annexin A10 recombinant protein (Accession Number: NM\_007193). Purification method: Antigen affinity purified.

## Formulation

PBS with 0.02% sodium azide and 50% glycerol pH 7.3.

## Storage

Store at -20°C. DO NOT ALIQUOT

## Clonality

Polyclonal

## Ig Type

Rabbit IgG

## Applications

ELISA, IF, IHC, WB

## Dilutions

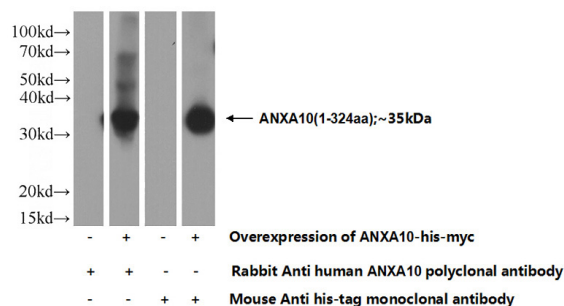
Recommended Dilution:

WB: 1:500-1:5000

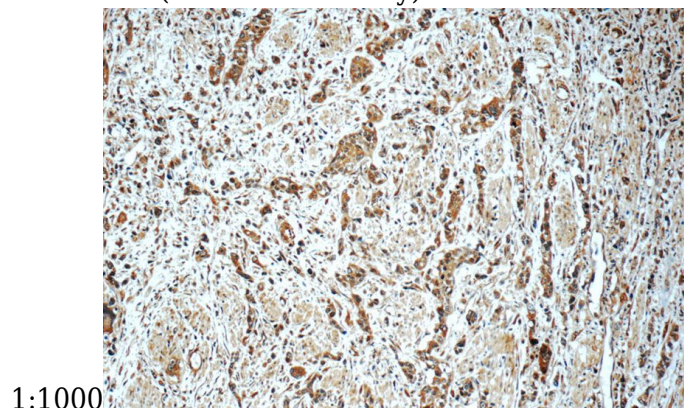
IHC: 1:20-1:200

IF: 1:10-1:100

## Validations



Transfected HEK-293 cells were subjected to SDS PAGE followed by western blot with Catalog No:108090(ANXA10 Antibody) at dilution of

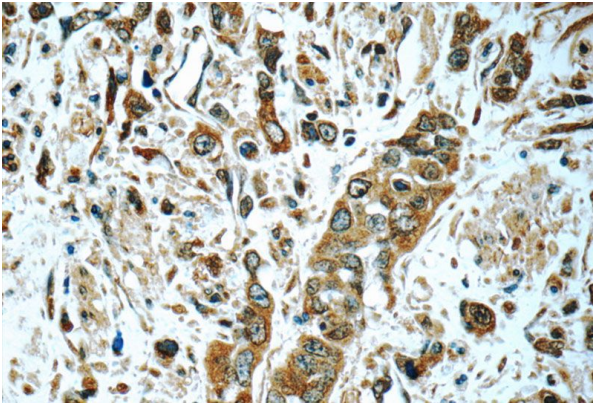


Immunohistochemistry of paraffin-embedded human stomach cancer tissue slide using Catalog No:108090(ANXA10 Antibody) at dilution of 1:100 (under 10x lens)

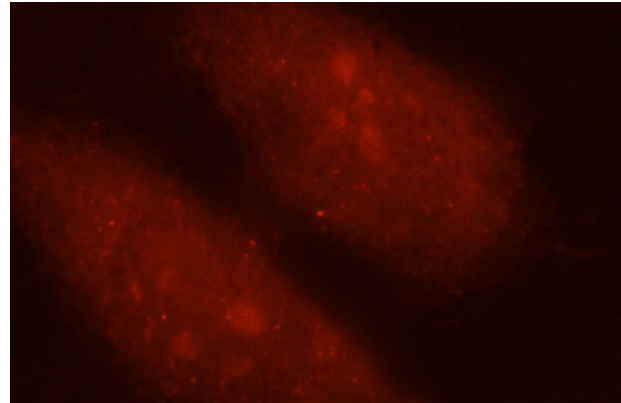
# Annexin A10 antibody

Catalog Number: 108090

---



Immunohistochemistry of paraffin-embedded human stomach cancer tissue slide using Catalog No:108090 (ANXA10 Antibody) at dilution of 1:100 (under 40x lens)



Immunofluorescent analysis of MCF-7 cells, using ANXA10 antibody Catalog No:108090 at 1:25 dilution and Rhodamine-labeled goat anti-rabbit IgG (red).