

# PPP1R3F antibody



Catalog Number: 114090

## Product name

PPP1R3F antibody

## Specificity

Human, Mouse; other species not tested.

## Antibody description

PPP1R3F Rabbit Polyclonal antibody. Positive WB detected in SMMC-7721 cells. Observed molecular weight by Western-blot: 83 kDa

## Preparation

This antibody was obtained by immunization of Peptide (Accession Number: NM\_033215). Purification method: Antigen affinity purified.

## Formulation

PBS with 0.02% sodium azide and 50% glycerol pH 7.3.

## Storage

Store at -20°C. DO NOT ALIQUOT

## Clonality

Polyclonal

## Ig Type

Rabbit IgG

## Applications

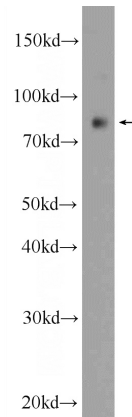
ELISA, WB

## Dilutions

Recommended Dilution:

WB: 1:500-1:5000

## Validations



SMMC-7721 cells were subjected to SDS PAGE followed by western blot with Catalog No:114090(PPP1R3F Antibody) at dilution of 1:1000