

# Anti-YB1 Rabbit antibody



Catalog Number: 166780

## Product name

Anti-YB1 Rabbit antibody

## Specificity

Human, Mouse, Rat

## Antibody description

YB1 Rabbit polyclonal antibody

## Preparation

Antigen: A synthesized peptide derived from human YB1

## Formulation

Rabbit IgG in phosphate buffered saline , pH 7.4, 150mM NaCl, 0.02% sodium azide and 50% glycerol.

## Storage

Store at 4°C short term. Store at -20°C long term. Avoid freeze / thaw cycle.

## Clonality

Polyclonal

## Ig Type

Rabbit IgG

## Applications

WB, IHC-P, ICC/IF, IP, FC

## Dilutions

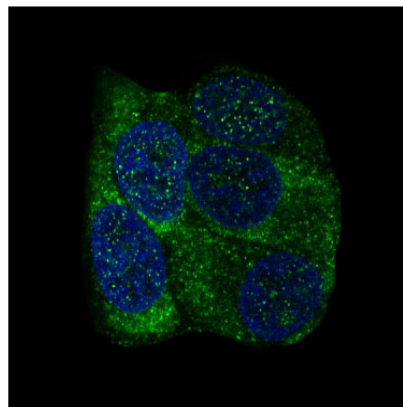
WB: 1/500-1/2000

IHC: 1/50-1/200

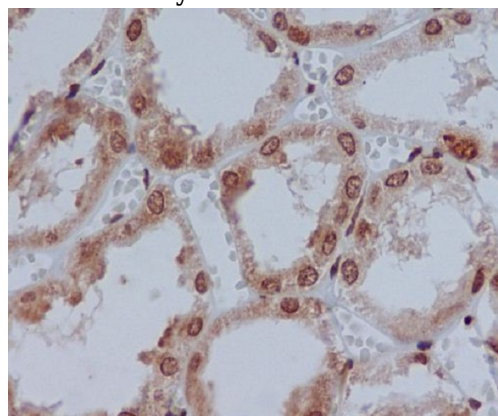
ICC/IF: 1/50-1/200

IP: 1/50

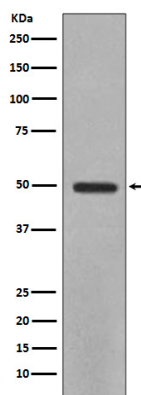
## Validations



Immunofluorescent analysis of MCF-7 cells, using YB1 Antibody.



Immunohistochemical analysis of paraffin-embedded human kidney, using YB1 Antibody.



Western blot analysis of YB1 expression in HeLa cell lysate.