

ROCK2-Specific antibody



Catalog Number: 114780

Product name

ROCK2-Specific antibody

IHC: 1:20-1:200

IF: 1:10-1:100

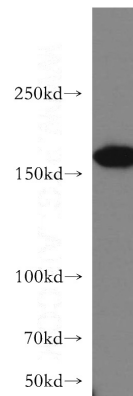
Specificity

Human, Mouse, Rat; other species not tested.

Validations

Antibody description

ROCK2-Specific Rabbit Polyclonal antibody. Positive WB detected in HeLa cells, mouse brain tissue. Positive IF detected in HepG2 cells. Positive IHC detected in human colon tissue, human brain tissue. Observed molecular weight by Western-blot: 164 kDa



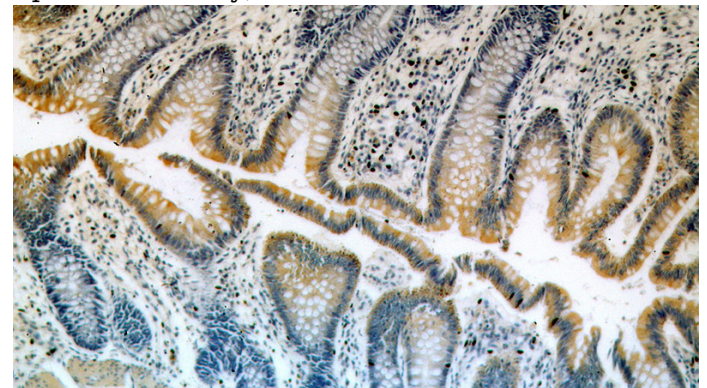
Preparation

This antibody was obtained by immunization of Peptide (Accession Number: NM_004850). Purification method: Antigen affinity purified.

HeLa cells were subjected to SDS PAGE followed by western blot with Catalog No:114780(Rock2-Specific antibody) at dilution of 1:400

Formulation

PBS with 0.02% sodium azide and 50% glycerol pH 7.3.



Storage

Store at -20°C. DO NOT ALIQUOT

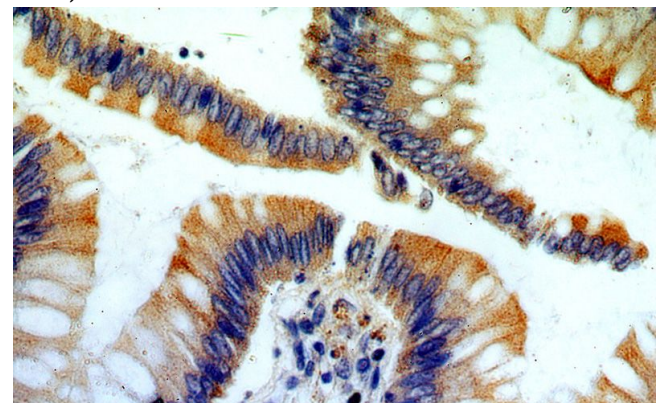
Clonality

Polyclonal

Immunohistochemical of paraffin-embedded human colon using Catalog No:114780(Rock2-Specific antibody) at dilution of 1:100 (under 10x lens)

Ig Type

Rabbit IgG



Applications

ELISA, WB, IHC, IF

Dilutions

Recommended Dilution:

WB: 1:200-1:1000

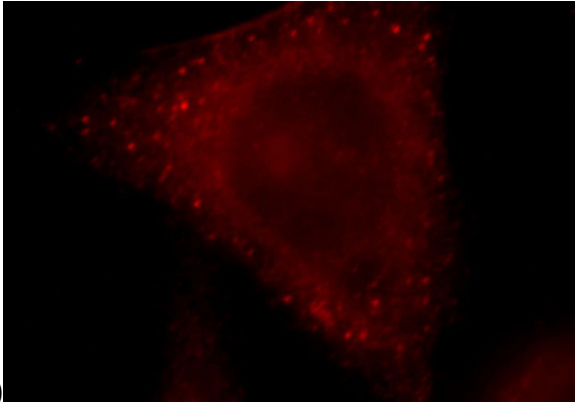
Immunohistochemical of paraffin-embedded

ROCK2-Specific antibody



Catalog Number: 114780

human colon using Catalog No:114780(RocK2-Specific antibody) at dilution of 1:100 (under 40x



lens)

Immunofluorescent analysis of HepG2 cells, using Rock2 antibody Catalog No:114780 at 1:25 dilution and Rhodamine-labeled goat anti-rabbit IgG (red).