

CALM3 Polyclonal Antibody



Catalog Number: 160780

Product name

CALM3 Polyclonal Antibody

Specificity

Human, Mouse, Rat

Antibody description

Polyclonal antibody to CALM3

Preparation

Antigen: A synthetic peptide corresponding to a sequence within amino acids 1-100 of human CALM3 (NP_005175.2).

Formulation

PBS with 0.02% sodium azide, 50% glycerol, pH7.3.

Storage

Store at -20°C. Avoid freeze / thaw cycles.

Clonality

Polyclonal

Ig Type

Rabbit IgG

Applications

WB, IHC, IF

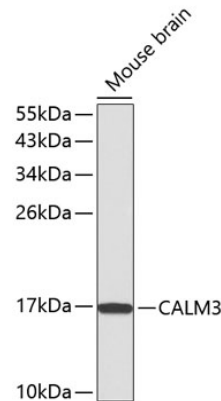
Dilutions

WB 1:500 - 1:2000

IHC 1:50 - 1:100

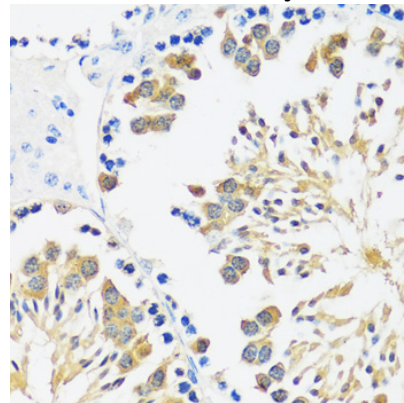
IF 1:50 - 1:100

Validations



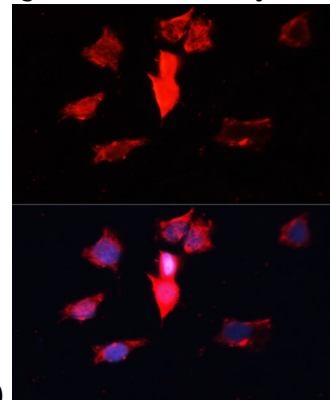
Western blot - CALM3 Polyclonal Antibody

Western blot analysis of extracts of mouse brain, using CALM3 antibody. Secondary antibody: HRP Goat Anti-Rabbit IgG (H+L) at 1:10000 dilution. Lysates/proteins: 25ug per lane. Blocking buffer: 3% nonfat dry milk in TBST.



Immunohistochemistry - CALM3 Polyclonal Antibody

Immunohistochemistry of paraffin-embedded mouse testis using CALM3 antibody at dilution of



1:100 (40x lens).

Immunofluorescence - CALM3 Polyclonal Antibody

CALM3 Polyclonal Antibody



Catalog Number: 160780

Immunofluorescence analysis of HeLa cells using

CALM3 antibody at dilution of 1:100. Blue: DAPI for nuclear staining.