

CYP11B2 antibody

Catalog Number: 109680

Product name

CYP11B2 antibody

IHC: 1:20-1:200

IF: 1:20-1:200

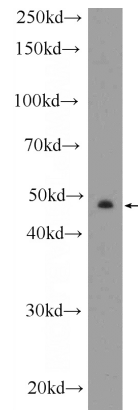
Specificity

Human, Mouse; other species not tested.

Validations

Antibody description

CYP11B2 Rabbit Polyclonal antibody. Positive IHC detected in human kidney tissue, human hepat°Cirrhosis tissue, mouse kidney tissue. Positive IF detected in SKOV-3 cells. Positive WB detected in SKOV-3 cells. Observed molecular weight by Western-blot: 50 kDa



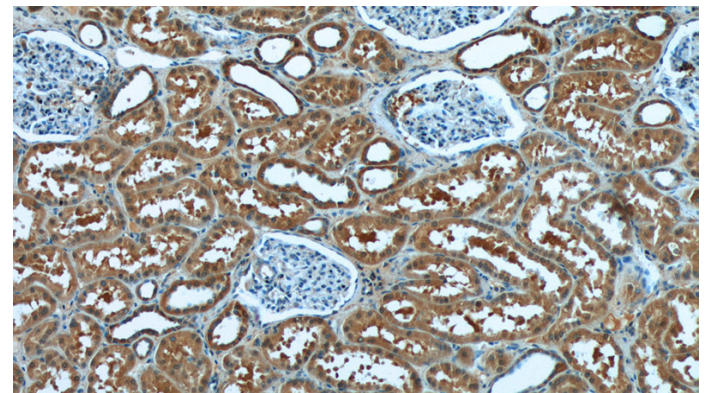
Preparation

This antibody was obtained by immunization of Peptide (Accession Number: NM_000498). Purification method: Antigen affinity purified.

SKOV-3 cells were subjected to SDS PAGE followed by western blot with Catalog No:109680(CYP11B2 Antibody) at dilution of 1:300

Formulation

PBS with 0.02% sodium azide and 50% glycerol pH 7.3.



Storage

Store at -20°C. DO NOT ALIQUOT

Clonality

Polyclonal

Ig Type

Rabbit IgG

Applications

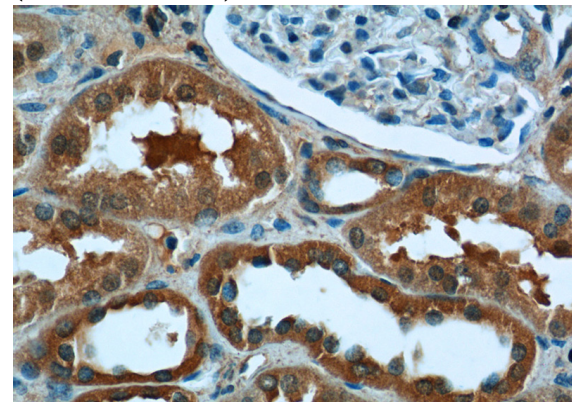
ELISA, IHC, WB, IF

Dilutions

Recommended Dilution:

WB: 1:200-1:1000

Immunohistochemistry of paraffin-embedded human kidney tissue slide using Catalog No:109680(CYP11B2 Antibody) at dilution of 1:50 (under 10x lens)

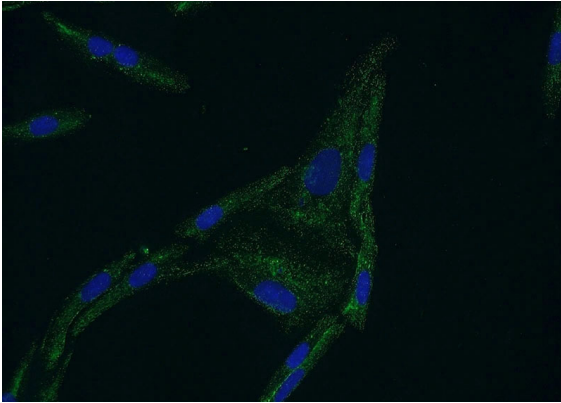


CYP11B2 antibody



Catalog Number: 109680

Immunohistochemistry of paraffin-embedded human kidney tissue slide using Catalog No:109680(CYP11B2 Antibody) at dilution of 1:50 (under 40x lens)



Immunofluorescent analysis of SKOV-3 cells using Catalog No:109680(CYP11B2 Antibody) at dilution of 1:50 and Alexa Fluor 488-conjugated AffiniPure Goat Anti-Rabbit IgG(H+L)