

IGF2BP2 antibody

Catalog Number: 111680

Product name

IGF2BP2 antibody

IP: 1:200-1:2000

IHC: 1:20-1:200

Specificity

Human, Mouse, Rat; other species not tested.

Antibody description

IGF2BP2 Rabbit Polyclonal antibody. Positive IHC detected in human pancreas cancer tissue. Positive IP detected in HEK-293 cells. Positive WB detected in human kidney tissue, COLO 320 cells, human heart tissue. Observed molecular weight by Western-blot: 65 kDa

Preparation

This antibody was obtained by immunization of IGF2BP2 recombinant protein (Accession Number: NM_006548). Purification method: Antigen affinity purified.

Formulation

PBS with 0.1% sodium azide and 50% glycerol pH 7.3.

Storage

Store at -20°C. DO NOT ALIQUOT

Clonality

Polyclonal

Ig Type

Rabbit IgG

Applications

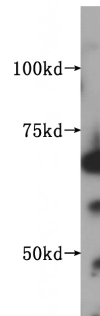
ELISA, WB, IHC, IP

Dilutions

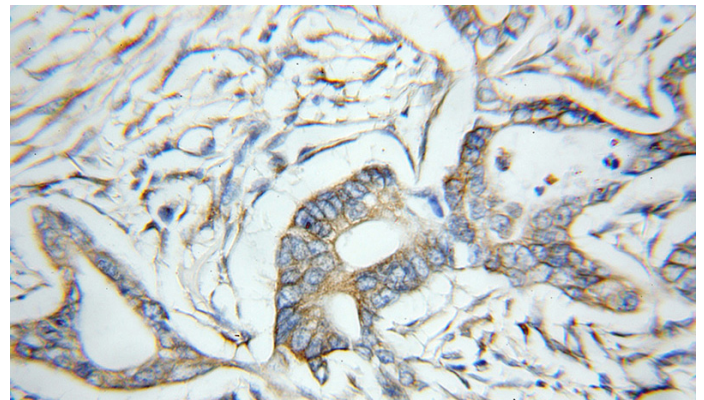
Recommended Dilution:

WB: 1:500-1:5000

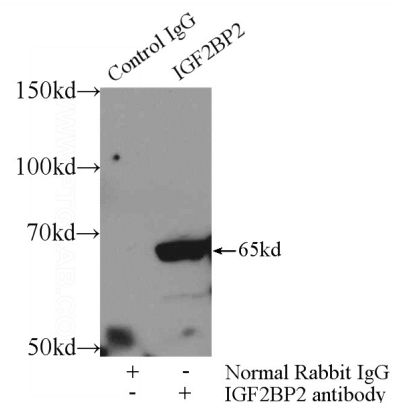
Validations



human kidney tissue were subjected to SDS PAGE followed by western blot with Catalog No:111680(IGF2BP2 antibody) at dilution of 1:1000



Immunohistochemical of paraffin-embedded human pancreas cancer using Catalog No:111680(IGF2BP2 antibody) at dilution of 1:50 (under 10x lens)



IGF2BP2 antibody



Catalog Number: 111680

IP Result of anti-IGF2BP2 (IP:Catalog No:111680, 3ug; Detection:Catalog No:111680 1:500) with HEK-293 cells lysate 1000ug.