

LMF1 antibody

Catalog Number: 112280

Product name

LMF1 antibody

Specificity

Human, Mouse, Rat; other species not tested.

Antibody description

LMF1 Rabbit Polyclonal antibody. Positive IHC detected in human liver cancer tissue. Positive WB detected in SKOV-3 cells. Observed molecular weight by Western-blot: 65-70 kDa

Preparation

This antibody was obtained by immunization of LMF1 recombinant protein (Accession Number: BC010738). Purification method: Antigen affinity purified.

Formulation

PBS with 0.1% sodium azide and 50% glycerol pH 7.3.

Storage

Store at -20°C. DO NOT ALIQUOT

Clonality

Polyclonal

Ig Type

Rabbit IgG

Applications

ELISA, WB, IHC

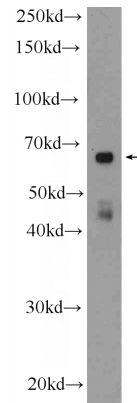
Dilutions

Recommended Dilution:

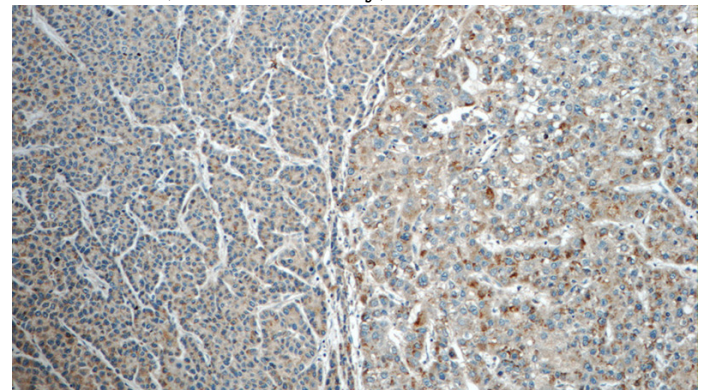
WB: 1:200-1:2000

IHC: 1:20-1:200

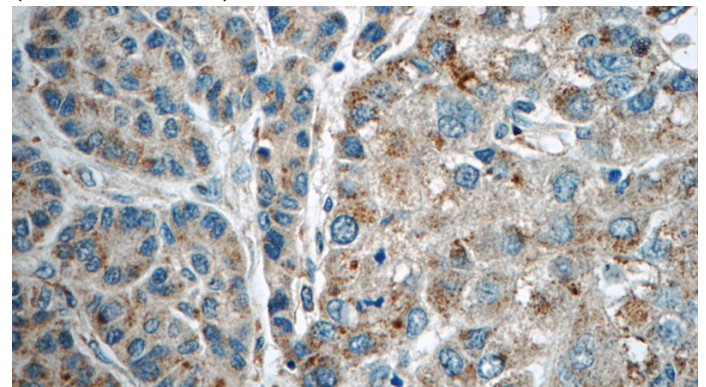
Validations



SKOV-3 cells were subjected to SDS PAGE followed by western blot with Catalog No:112280(LMF1 Antibody) at dilution of 1:600



Immunohistochemistry of paraffin-embedded human liver cancer tissue slide using Catalog No:112280(LMF1 Antibody) at dilution of 1:50 (under 10x lens)



Immunohistochemistry of paraffin-embedded human liver cancer tissue slide using Catalog No:112280(LMF1 Antibody) at dilution of 1:50 (under 40x lens)