

Namilumab (Synonyms: ANTI-HGM-CSF IGG1)



Catalog Number: 176980

Product name

Namilumab (Synonyms: ANTI-HGM-CSF IGG1)

Specificity

Human CSF2 / GM-CSF

Antibody description

Anti-CSF2 / GM-CSF Antibody (Namilumab)

Preparation

Recombinant expression and purified from CHO cells.

Formulation

0.1 M Pro-Ac, 20 mM Arg, pH 5.0

Storage

-80°C for 2 years under sterile conditions; -20°C for 1 year under sterile conditions; Avoid repeated freeze-thaw cycles.

Clonality

Monoclonal

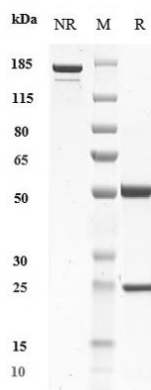
Ig Type

IgG1

Applications

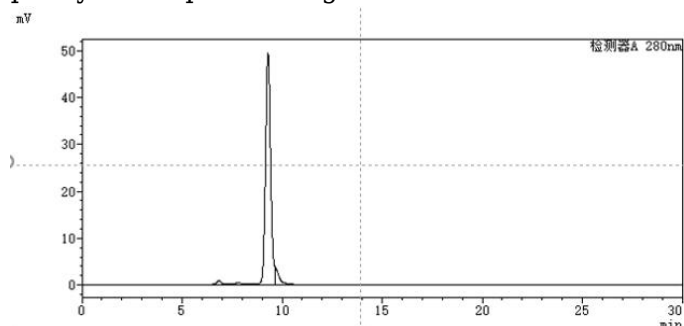
ELISA

Validations



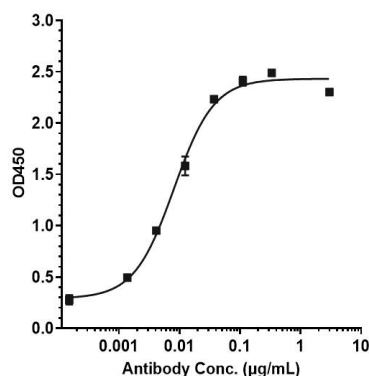
SDS-PAGE

Anti-CSF2 / GM-CSF Antibody (namilumab) on SDS-PAGE under reducing (R) condition. The purity of the protein is greater than 90%.



SEC-HPLC

The purity of Anti-CSF2 / GM-CSF Antibody (namilumab) is 90.29%, determined by SEC-HPLC.



Bioactivity: ELISA

Immobilized human GM CSF Nhis at 2 ug/mL can bind Anti-CSF2 / GM-CSF Antibody (namilumab), EC50=0.008074 ug/mL.