

# HRAS-Specific antibody



Catalog Number: 106980

## Product name

HRAS-Specific antibody

IHC: 1:20-1:200

IF: 1:10-1:100

## Specificity

Human, Mouse; other species not tested.

## Antibody description

HRAS-Specific Rabbit Polyclonal antibody. Positive WB detected in HEK-293 cells, NIH/3T3 cells, PC-3 cells. Positive FC detected in HeLa cells. Positive IHC detected in human kidney tissue, human prostate hyperplasia tissue. Positive IF detected in HepG2 cells. Observed molecular weight by Western-blot: 21 kDa

## Preparation

This antibody was obtained by immunization of Peptide (Accession Number: NM\_176795). Purification method: Antigen affinity purified.

## Formulation

PBS with 0.02% sodium azide and 50% glycerol pH 7.3.

## Storage

Store at -20°C. DO NOT ALIQUOT

## Clonality

Polyclonal

## Ig Type

Rabbit IgG

## Applications

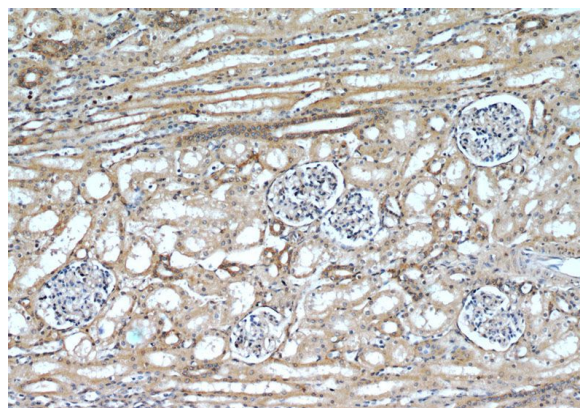
ELISA, IF, IHC, WB, FC

## Dilutions

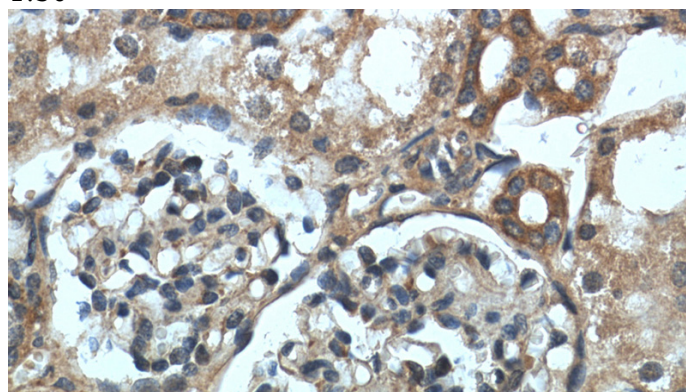
Recommended Dilution:

WB: 1:200-1:1000

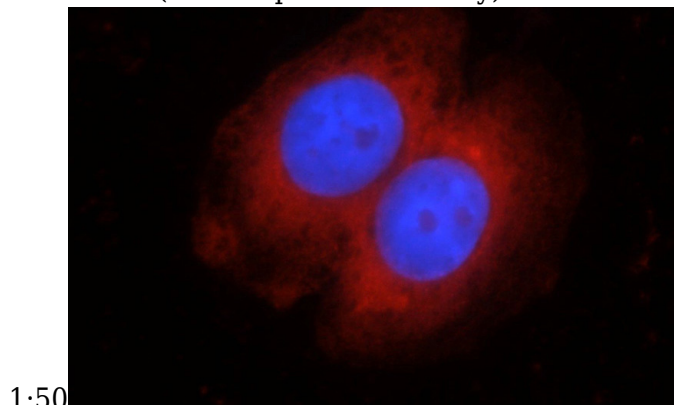
## Validations



Immunohistochemistry of paraffin-embedded human kidney slide using Catalog No:111460(HRAS-Specific Antibody) at dilution of 1:50



Immunohistochemistry of paraffin-embedded human kidney slide using Catalog No:111460(HRAS-Specific Antibody) at dilution of



1:50

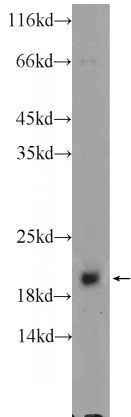
Immunofluorescent analysis of HepG2 cells using

# HRAS-Specific antibody



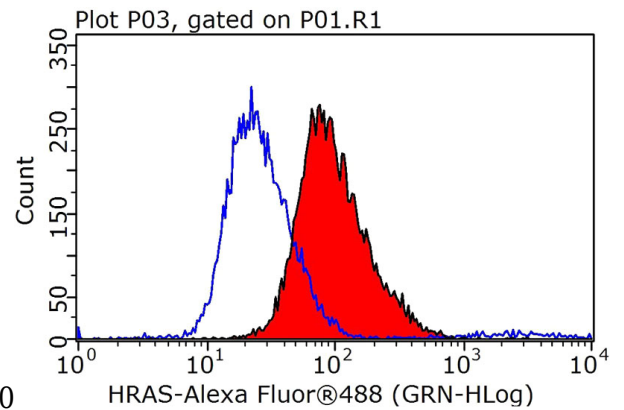
Catalog Number: 106980

Catalog No:111460(HRAS-Specific Antibody) at dilution of 1:25 and Rhodamine-Goat anti-Rabbit



IgG

HEK-293 cells were subjected to SDS PAGE followed by western blot with Catalog No:111460(HRAS-Specific Antibody) at dilution of



1X10<sup>6</sup> HeLa cells were stained with 1ug HRAS-Specific antibody (Catalog No:111460, red) and control antibody (blue). Fixed with 90% MeOH blocked with 3% BSA (30 min). Alexa Fluor 488-conjugated AffiniPure Goat Anti-Rabbit IgG(H+L) with dilution 1:1000.