

## General Information

### Gene Name Synonym

Attachment glycoprotein G; Membrane-bound glycoprotein

### Protein Construction

A DNA sequence encoding the glycoprotein G extracellular domain (Asn 66-Arg297) of human respiratory syncytial virus A (93% homologous with strain rsb1734) (P27022-1) was expressed, with a C-terminal polyhistidine tag.

### Organism

RSV

### Expression Host

Human Cells

## QC Testing

### Purity

> 90 % as determined by SDS-PAGE

### Endotoxin

< 1.0 EU per  $\mu\text{g}$  of the protein as determined by the LAL method

### Stability

Samples are stable for up to twelve months from date of receipt at  $-70^{\circ}\text{C}$

### Predicted N terminal

Asn 66

### Molecular Mass

The secreted recombinant human RSV-G comprises 242 amino acids and has a predicted molecular mass of 26.3 kDa. As a result of highly glycosylation, the apparent molecular mass of RSV protein G is approximately 60-90 kDa in SDS-PAGE under reducing conditions.

### Formulation

Lyophilized from sterile PBS, pH 7.4

1. 5 % trehalose and mannitol are added as protectants before lyophilization.

2. Please contact us for any concerns or special requirements.

## Usage Guide

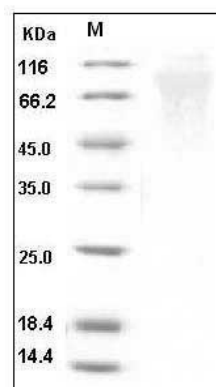
### Storage

Store it under sterile conditions at  $-20^{\circ}\text{C}$  to  $-80^{\circ}\text{C}$ . It is recommended that the protein be aliquoted for optimal storage. Avoid repeated freeze-thaw cycles.

### Reconstitution

Adding sterile water, prepare a stock solution of 0.25 mg/ml. Concentration is measured by UV-Vis.

### SDS-PAGE



Human RSV (A, rsb1734) glycoprotein G / RSV-G Protein (93% Homology) (His Tag) SDS-PAGE