

# Anti-PARP2 antibody



Catalog Number: 176580

## Product name

Anti-PARP2 antibody

## Specificity

Human, Mouse, Rat

## Antibody description

Rabbit monoclonal antibody to PARP2

## Preparation

This antigen of this antibody was recombinant protein within the c-terminus of human parp2.

## Formulation

Liquid, 1\*TBS (pH7.4), 0.05% BSA, 40% Glycerol.  
Preservative: 0.05% Sodium Azide.

## Storage

Store at +4°C after thawing. Aliquot store at -20°C. Avoid repeated freeze / thaw cycles.

## Clonality

Monoclonal

## Ig Type

Rabbit IgG

## Applications

WB, FC

## Dilutions

WB: 1:500-1:1,000

FC: 1:50-1:100

## Validations

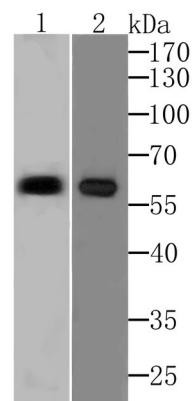


Fig1: Western blot analysis of PARP2 on SiHa and Raji cell lysates using anti-PARP2 at 1/500

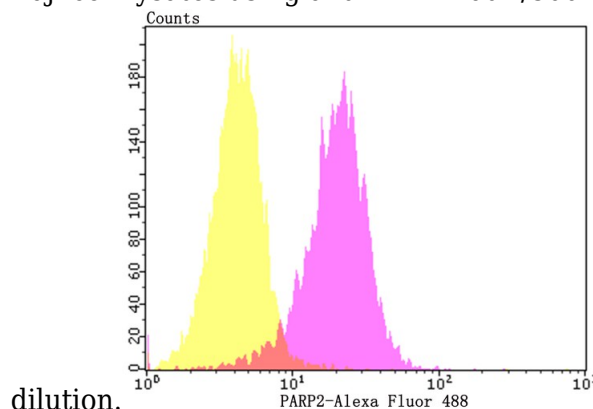


Fig2: Flow cytometric analysis of SH-SY-5Y cells with PARP2 antibody at 1/50 dilution (Fuchsia) compared with an unlabelled control (cells without incubation with primary antibody; Yellow). Alexa Fluor 488-conjugated goat anti-rabbit IgG was used as the secondary antibody.