

# ADRA1A Polyclonal Antibody



Catalog Number: 165580

## Product name

ADRA1A Polyclonal Antibody

## Specificity

Human, Mouse, Rat

## Antibody description

Polyclonal antibody to ADRA1A

## Preparation

Antigen: A synthetic peptide of human ADRA1A

## Formulation

PBS with 0.02% sodium azide, 50% glycerol, pH7.3.

## Storage

Store at -20°C. Avoid freeze / thaw cycles.

## Clonality

Polyclonal

## Ig Type

Rabbit IgG

## Applications

WB, IHC, IF

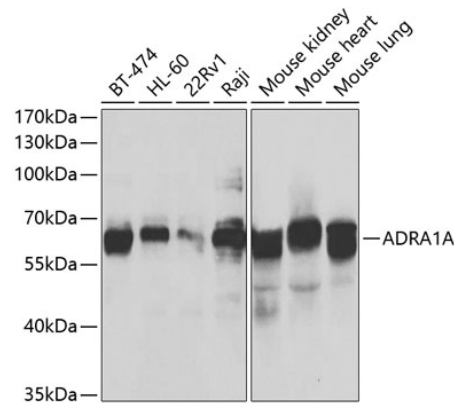
## Dilutions

WB 1:500 - 1:2000

IHC 1:50 - 1:100

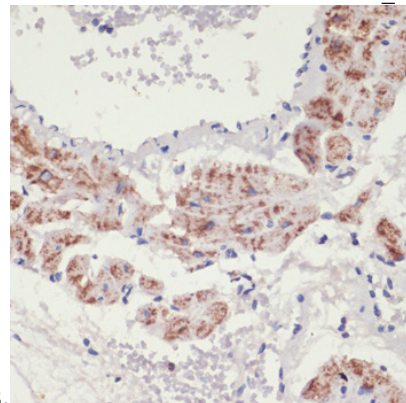
IF 1:50 - 1:200

## Validations



Western blot - ADRA1A Polyclonal Antibody

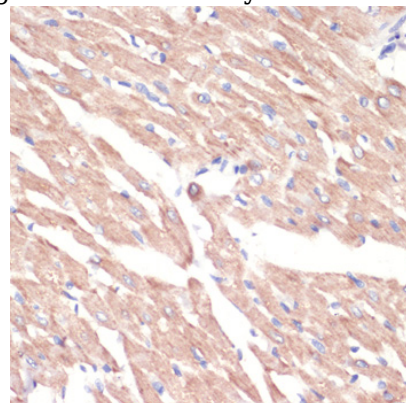
Western blot analysis of extracts of various cell lines, using ADRA1A antibody at 1:500 dilution. Secondary antibody: HRP Goat Anti-Rabbit IgG (H+L) at 1:10000 dilution. Lysates/proteins: 25ug per lane. Blocking buffer: 3% nonfat dry milk in TBST. Detection: ECL Enhanced Kit. Exposure



time: 30s.

Immunohistochemistry - ADRA1A Polyclonal Antibody

Immunohistochemistry of paraffin-embedded rat lung using ADRA1A antibody at dilution of 1:100



(40x lens).

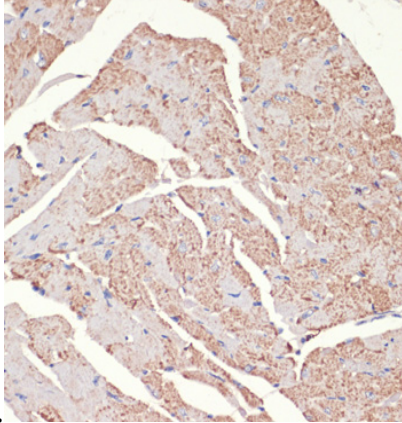
# ADRA1A Polyclonal Antibody

Catalog Number: 165580

---

Immunohistochemistry - ADRA1A Polyclonal Antibody

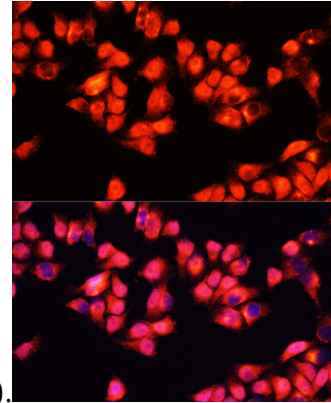
Immunohistochemistry of paraffin-embedded rat heart using ADRA1A antibody at dilution of 1:100



(40x lens).

Immunohistochemistry - ADRA1A Polyclonal Antibody

Immunohistochemistry of paraffin-embedded mouse heart using ADRA1A antibody at dilution of



1:100 (40x lens).

Immunofluorescence - ADRA1A Polyclonal Antibody

Immunofluorescence analysis of HeLa cells using ADRA1A antibody at dilution of 1:100. Blue: DAPI for nuclear staining.