

General Information

Gene Name Synonym

Aging-associated gene 4 protein; Apolipoprotein J; Apo-J; Complement cytolysis inhibitor; CLI; Complement-associated protein SP-40,40; Ku70-binding protein 1; NA1/NA2; Testosterone-repressed prostate message 2; TRPM-2 [Cleaved into: Clusterin beta chain; ApoJalpha; Complement cytolysis inhibitor a chain; Clusterin alpha chain; ApoJbeta; Complement cytolysis inhibitor b chain]

Protein Construction

A DNA sequence encoding the human CLU isoform long (NP_001822.2) (Met 1-Glu 501) was expressed, with a C-terminal polyhistidine tag.

Organism

Human

Expression Host

Human Cells

QC Testing

Purity

> 92 % as determined by SDS-PAGE

Endotoxin

< 1.0 EU per μg of the protein as determined by the LAL method

Stability

Samples are stable for up to twelve months from date of receipt at -70°C

Predicted N terminal

Asp 75 (β chain) & Ser 280 (α chain)

Molecular Mass

The full length of recombinant human CLU comprises 438 amino acids and has a calculated molecular mass of 51.5 kDa (24.5 + 27). The apparent molecular mass of the recombinant protein is approximately 37-39 kDa in SDS-PAGE under reducing conditions, corresponding to the cleaved β chain, and α chain respectively.

Formulation

Lyophilized from sterile PBS, pH 7.4

1. 5 % trehalose and mannitol are added as protectants before lyophilization.

2. Please contact us for any concerns or special requirements.

Usage Guide

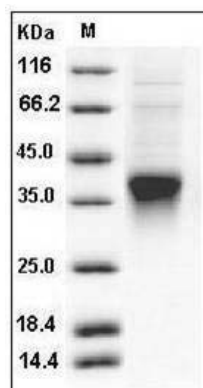
Storage

Store it under sterile conditions at -20°C to -80°C . It is recommended that the protein be aliquoted for optimal storage. Avoid repeated freeze-thaw cycles.

Reconstitution

Adding sterile water, prepare a stock solution of 0.25 mg/ml. Concentration is measured by UV-Vis.

SDS-PAGE



Human Clusterin / Apolipoprotein J / Apo-J / CLU Protein (His Tag) SDS-PAGE