

# PREB antibody

Catalog Number: 114180

## Product name

PREB antibody

## Immunogen

[Human PREB Recombinant protein \(GST tag\)](#)

## Specificity

Human, Mouse; other species not tested.

## Antibody description

PREB Rabbit Polyclonal antibody. Positive WB detected in SKOV-3 cells, 3T3-L1 cells, HepG2 cells, HT-1080 cells. Positive IHC detected in human prostate cancer tissue, human ovary tumor tissue. Positive IF detected in HepG2 cells. Observed molecular weight by Western-blot: 45 kDa

## Preparation

This antibody was obtained by immunization of PREB recombinant protein (Accession Number: NM\_013388). Purification method: Antigen affinity purified.

## Formulation

PBS with 0.1% sodium azide and 50% glycerol pH 7.3.

## Storage

Store at -20°C. DO NOT ALIQUOT

## Clonality

Polyclonal

## Ig Type

Rabbit IgG

## Applications

ELISA, WB, IHC, IF

## Dilutions

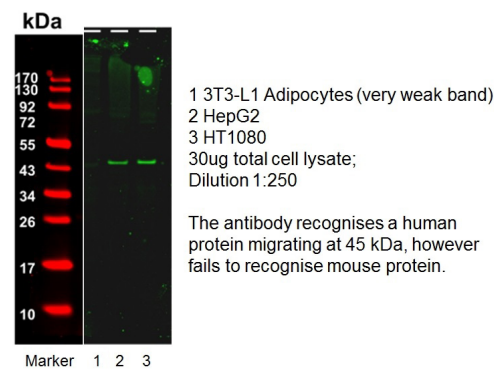
Recommended Dilution:

WB: 1:200-1:2000

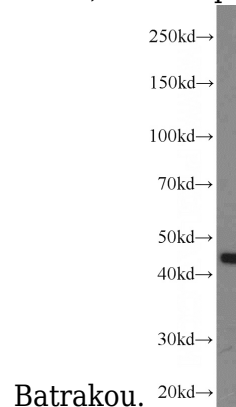
IHC: 1:20-1:200

IF: 1:10-1:100

## Validations



WB result of anti-PREB (Catalog No:114180, 1:250) with HepG2 and HT1080 by Dr. Dzmitry

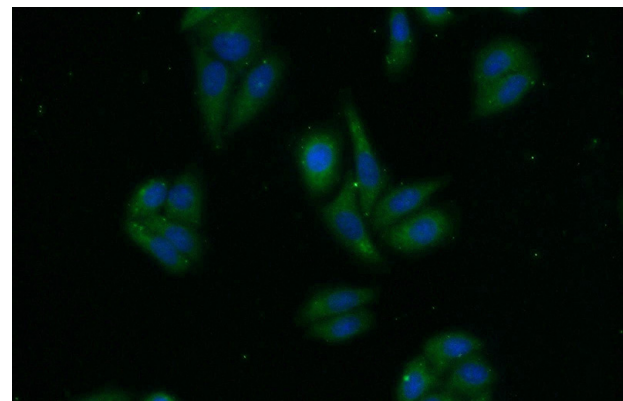
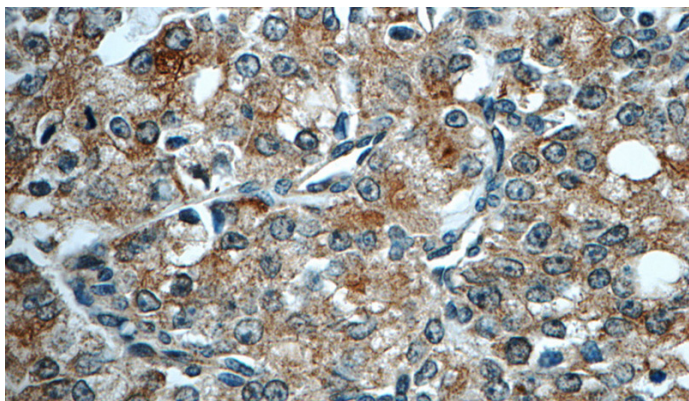


SKOV-3 cells were subjected to SDS PAGE followed by western blot with Catalog No:114180(PREB antibody) at dilution of 1:600

# PREB antibody

Catalog Number: 114180

---



Immunohistochemistry of paraffin-embedded human prostate cancer tissue slide using Catalog No:114180(PREB Antibody) at dilution of 1:50 (under 40x lens)

Immunofluorescent analysis of HepG2 cells using Catalog No:114180(PREB Antibody) at dilution of 1:25 and Alexa Fluor 488-conjugated AffiniPure Goat Anti-Rabbit IgG(H+L)