

# Anti-IL-1 beta antibody



Catalog Number: 104180

## Product name

Anti-IL-1 beta antibody

## Immunogen

[Mouse IL-1 beta recombinant protein](#)

## Specificity

Mouse IL-1 beta

## Antibody description

Rabbit polyclonal to IL-1 beta

## Preparation

Produced in rabbits immunized with purified, recombinant Mouse IL-1 beta (rM IL-1 beta; P10749; Val118-Ser269). IL-1 beta specific IgG was purified by Mouse IL-1 beta affinity chromatography.

## Formulation

0.2 µm filtered solution in PBS

## Storage

This antibody can be stored at 2°C-8°C for one month without detectable loss of activity. Antibody products are stable for twelve months from date of receipt when stored at -20°C to -80°C.

Preservative-Free.

Sodium azide is recommended to avoid contamination (final concentration 0.05%-0.1%). It is toxic to cells and should be disposed of

properly. Avoid repeated freeze-thaw cycles.

## Clonality

Polyclonal

## Ig Type

Rabbit IgG

## Applications

ELISA, WB

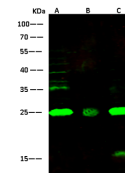
## Dilutions

WB: 2-10 µg/ml

ELISA: 0.1-0.2 µg/ml

This antibody can be used at 0.1-0.2 µg/mL with the appropriate secondary reagents to detect Mouse IL-1 beta.

## Validations



Items	Lanes	A	B	C
Sample (whole cell lysate)		Jurkat	Hela	MOLT4
Sample Volume (µg/lane)		30	30	30
Gel	13% SDS-PAGE reducing gel			
Recommended Concentration	2-10 µg/ml			
Secondary Antibody	Dylight 800-labeled Antibody To Rabbit IgG (H+L), at 1:5000 dilution.			
Developed using Odyssey imaging system.				
Explanation	Predicted band size : 33 kDa Observed band size : 25 kDa Additional bands at : 40 kDa, 37 kDa, 35 kDa and 16 kDa [We are unsure as to the identity of these extra bands. They are possible non-specific bindings].			

IL-1 beta Antibody, Rabbit PAb, Antigen Affinity Purified, Western blot