

# CDH3 Polyclonal Antibody



Catalog Number: 160180

## Product name

CDH3 Polyclonal Antibody

## Specificity

Human

## Antibody description

Polyclonal antibody to CDH3

## Preparation

Antigen: A synthetic peptide of human CDH3

## Formulation

PBS with 0.02% sodium azide, pH7.3.

## Storage

Store at 4°C. Avoid freeze / thaw cycles.

## Clonality

Polyclonal

## Ig Type

Rabbit IgG

## Applications

WB, IHC, FC

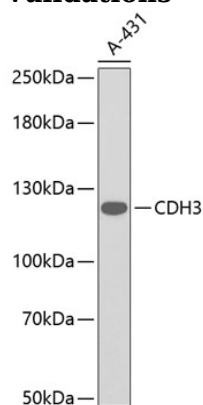
## Dilutions

WB 1:500 - 1:2000

IHC 1:50 - 1:100

FC 1:20 - 1:50

## Validations



## Western blot - CDH3 Polyclonal Antibody

Western blot analysis of extracts of A-431 cells, using CDH3 antibody. Secondary antibody: HRP Goat Anti-Rabbit IgG (H+L) at 1:10000 dilution. Lysates/proteins: 25ug per lane. Blocking buffer: 3% nonfat dry milk in TBST.