

Anti-ROCK2 Rabbit antibody



Catalog Number: 168880

Product name

Anti-ROCK2 Rabbit antibody

Specificity

Human, Mouse, Rat

Antibody description

ROCK2 Rabbit monoclonal antibody

Preparation

Antigen: A synthetic peptide of human ROCK2

Formulation

Supplied in 50nM Tris-Glycine(pH 7.4), 0.15M NaCl, 40%Glycerol, 0.01% sodium azide and 0.05% BSA.

Storage

Store at 4°C short term. Aliquot and store at -20°C long term. Avoid freeze / thaw cycle.

Clonality

Monoclonal

Ig Type

Rabbit IgG

Applications

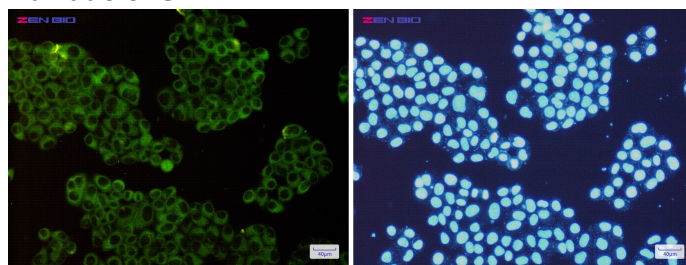
WB, ICC/IF

Dilutions

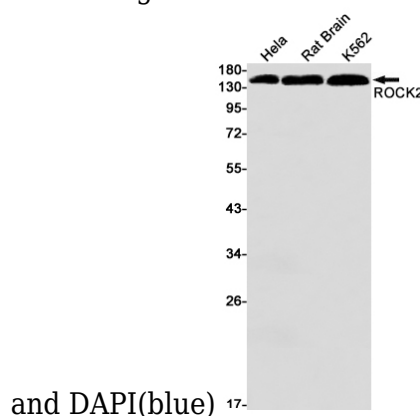
1:2000

1:50

Validations



Immunocytochemistry of ROCK2(green) in HeLa cells using ROCK2 Rabbit mAb at dilution 1/200,



and DAPI(blue)

Western blot detection of ROCK2 in HeLa,Rat Brain,K562 cell lysates using ROCK2 Rabbit mAb(1:1000 diluted).Predicted band size:161kDa.Observed band size:161kDa.