

RASIP1 antibody

Catalog Number: 114480

Product name

RASIP1 antibody

Immunogen

[Human RASIP1 Recombinant protein \(His tag\)](#)

Specificity

Human, Mouse, Rat; other species not tested.

Antibody description

RASIP1 Rabbit Polyclonal antibody. Positive WB detected in mouse lung tissue. Positive IP detected in mouse lung tissue. Positive IHC detected in human lung tissue, human heart tissue. Positive IF detected in HepG2 cells. Observed molecular weight by Western-blot: 115 kDa

Preparation

This antibody was obtained by immunization of RASIP1 recombinant protein (Accession Number: NM_017805). Purification method: Antigen affinity purified.

Formulation

PBS with 0.1% sodium azide and 50% glycerol pH 7.3.

Storage

Store at -20°C. DO NOT ALIQUOT

Clonality

Polyclonal

Ig Type

Rabbit IgG

Applications

ELISA, WB, IHC, IF, IP

Dilutions

Recommended Dilution:

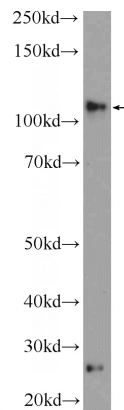
WB: 1:200-1:1000

IP: 1:200-1:2000

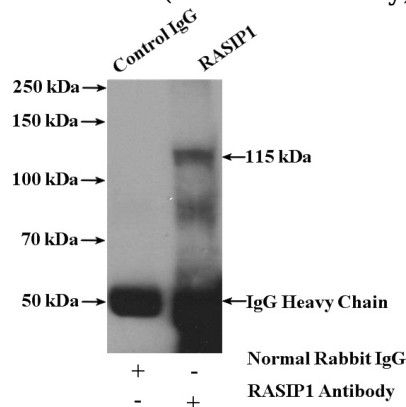
IHC: 1:20-1:200

IF: 1:10-1:100

Validations



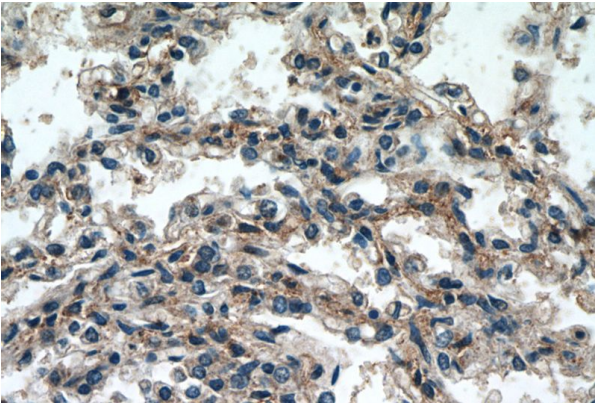
mouse lung tissue were subjected to SDS PAGE followed by western blot with Catalog No:114480(RASIP1 Antibody) at dilution of 1:300



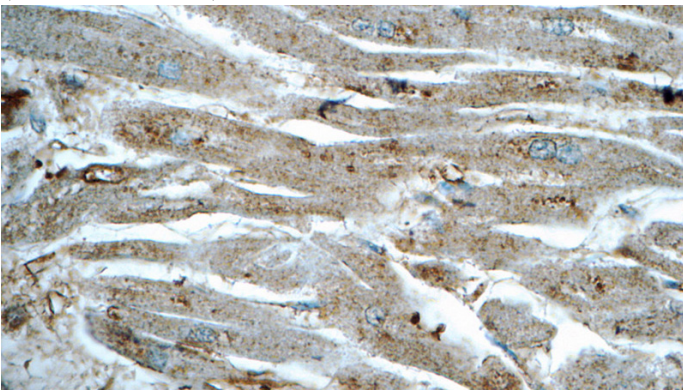
IP Result of anti-RASIP1 (IP:Catalog No:114480, 4ug; Detection:Catalog No:114480 1:500) with mouse lung tissue lysate 4000ug.

RASIP1 antibody

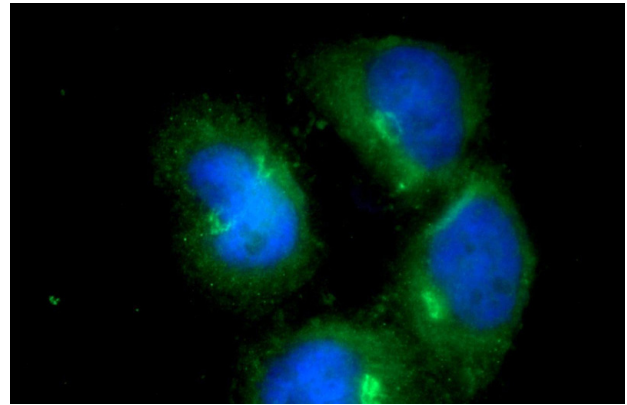
Catalog Number: 114480



Immunohistochemistry of paraffin-embedded human lung tissue slide using Catalog No:114480(RASIP1 Antibody) at dilution of 1:50 (under 40x lens)



Immunohistochemistry of paraffin-embedded human heart tissue slide using Catalog No:114480(RASIP1 Antibody) at dilution of 1:50 (under 40x lens)



Immunofluorescent analysis of HepG2 cells using Catalog No:114480(RASIP1 Antibody) at dilution of 1:25 and Alexa Fluor 488-conjugated AffiniPure Goat Anti-Rabbit IgG(H+L)