

# DNASE1L1 Polyclonal Antibody



Catalog Number: 161480

## Product name

DNASE1L1 Polyclonal Antibody

## Specificity

Mouse, Rat

## Antibody description

Polyclonal antibody to DNASE1L1

## Preparation

Antigen: Recombinant fusion protein containing a sequence corresponding to amino acids 1-302 of human DNASE1L1 (NP\_006721.1).

## Formulation

PBS with 0.02% sodium azide, 50% glycerol, pH7.3.

## Storage

Store at -20°C. Avoid freeze / thaw cycles.

## Clonality

Polyclonal

## Ig Type

Rabbit IgG

## Applications

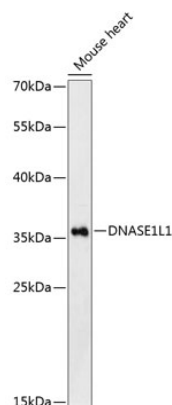
WB, IF

## Dilutions

WB 1:500 - 1:2000

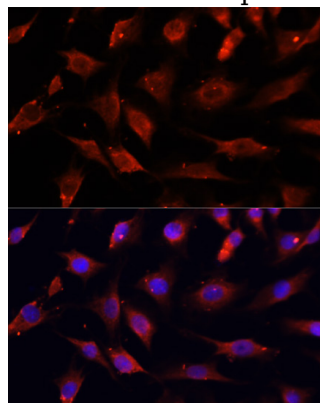
IF 1:50 - 1:200

## Validations



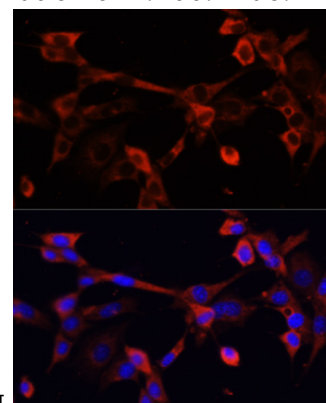
## Western blot - DNASE1L1 Polyclonal Antibody

Western blot analysis of extracts of mouse heart, using DNASE1L1 Antibody at 1:3000 dilution. Secondary antibody: HRP Goat Anti-Rabbit IgG (H+L) at 1:10000 dilution. Lysates/proteins: 25ug per lane. Blocking buffer: 3% nonfat dry milk in TBST. Detection: ECL Enhanced Kit. Exposure time: 90s.



## Immunofluorescence - DNASE1L1 Polyclonal Antibody

Immunofluorescence analysis of C6 cells using DNASE1L1 antibody at dilution of 1:100. Blue:



DAPI for nuclear staining.

# DNASE1L1 Polyclonal Antibody



Catalog Number: 161480

---

Immunofluorescence - DNASE1L1 Polyclonal Antibody

Immunofluorescence analysis of NIH/3T3 cells using DNASE1L1 antibody at dilution of 1:100. Blue: DAPI for nuclear staining.