

CCS antibody

Catalog Number: 109080

Product name

CCS antibody

IP: 1:500-1:5000

IF: 1:20-1:200

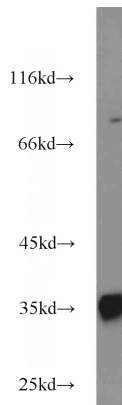
Specificity

Human; other species not tested.

Validations

Antibody description

CCS Rabbit Polyclonal antibody. Positive IP detected in HepG2 cells. Positive WB detected in HepG2 cells. Positive IF detected in HepG2 cells. Observed molecular weight by Western-blot: 34 kDa, 84 kDa



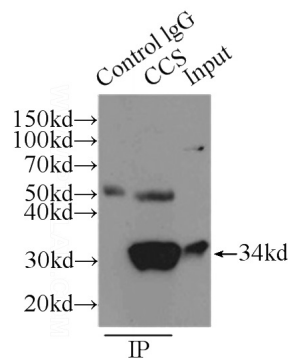
Preparation

This antibody was obtained by immunization of CCS recombinant protein (Accession Number: NM_005125). Purification method: Antigen affinity purified.

HepG2 cells were subjected to SDS PAGE followed by western blot with Catalog No:109080(CCS antibody) at dilution of 1:1000

Formulation

PBS with 0.02% sodium azide and 50% glycerol pH 7.3.



Storage

Store at -20°C. DO NOT ALIQUOT

Clonality

Polyclonal

IP Result of anti-CCS (IP:Catalog No:109080, 3ug; Detection:Catalog No:109080 1:1000) with HepG2 cells lysate 6000ug.

Ig Type

Rabbit IgG

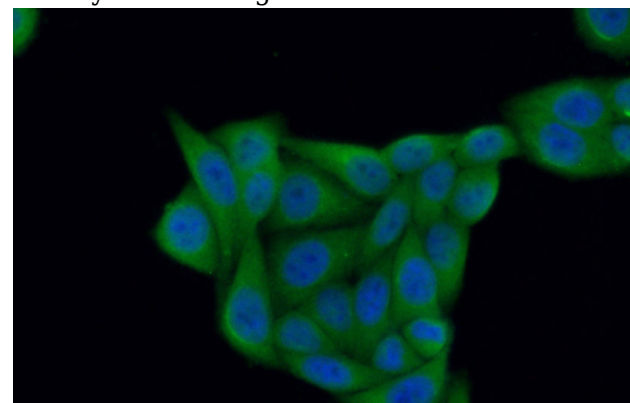
Applications

ELISA, WB, IP, IF

Dilutions

Recommended Dilution:

WB: 1:500-1:5000



Immunofluorescent analysis of (10% Formaldehyde) fixed HepG2 cells using Catalog

CCS antibody



Catalog Number: 109080

No:109080(CCS Antibody) at dilution of 1:50 and

Alexa Fluor 488-conjugated AffiniPure Goat Anti-Rabbit IgG(H+L)