

Anti-Phospho-CDK1 (Tyr15) Rabbit antibody



Catalog Number: 166770

Product name

Anti-Phospho-CDK1 (Tyr15) Rabbit antibody

Specificity

Human, Mouse, Rat

Antibody description

Phospho-CDK1 (Tyr15) Rabbit polyclonal antibody

Preparation

Antigen: Peptide sequence around phosphorylation site of tyrosine 15 (G-T-Y(p)-G-V) derived from Human CDC2.

Formulation

Supplied at 1.0mg/mL in phosphate buffered saline (without Mg²⁺ and Ca²⁺), pH 7.4, 150mM NaCl, 0.02% sodium azide and 50% glycerol.

Storage

Store at 4°C short term. Store at -20°C long term. Avoid freeze / thaw cycle.

Clonality

Polyclonal

Ig Type

Rabbit IgG

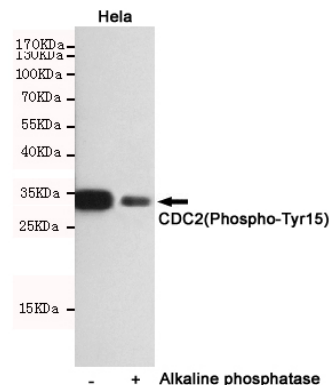
Applications

WB

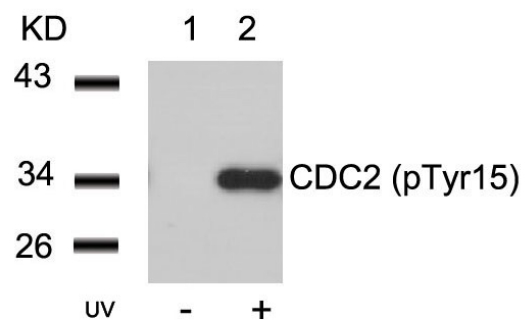
Dilutions

WB:1/500-1/1000

Validations



Western blot detection of CDC2(Phospho-Tyr15) in HeLa cells untreated or treated with Alkaline phosphatase using CDC2(Phospho-Tyr15) Rabbit pAb (dilution 1:1000). Predicted band size:34kDa.Observed band size:34kDa.



Western blot analysis of extracts from HeLa cells untreated (lane 1) or treated with UV (lane 2) using CDC2 (Phospho-Tyr15) Antibody .