

General Information

Protein Construction

A DNA sequence encoding the rhesus CXCL9 (NP_001028108.1) (Thr23-Thr125) was expressed and purified with an initial Met.

Organism

Rhesus

Expression Host

E. coli

QC Testing

Purity

> 95 % as determined by SDS-PAGE

Endotoxin

Please contact us for more information.

Stability

Samples are stable for up to twelve months from date of receipt at -70°C

Predicted N terminal

Met

Molecular Mass

The recombinant rhesus CXCL9 consists of 104 amino acids and has a calculated molecular mass

of 11.9 kDa

Formulation

Lyophilized from sterile PBS, pH 7.4

1. 5 % trehalose and mannitol are added as protectants before lyophilization.

2. Please contact us for any concerns or special requirements.

Usage Guide

Storage

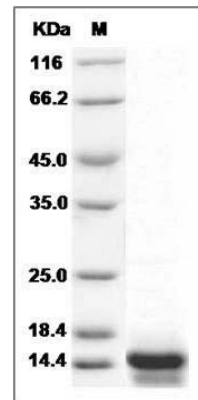
Store it under sterile conditions at -20°C to -80°C.

It is recommended that the protein be aliquoted for optimal storage. Avoid repeated freeze-thaw cycles.

Reconstitution

Adding sterile water, prepare a stock solution of 0.25 mg/ml. Concentration is measured by UV-Vis.

SDS-PAGE



Cynomolgus CXCL9 / MIG / C-X-C motif chemokine 9 Protein SDS-PAGE