

Anti-CD62L/L-Selectin antibody



Catalog Number: 106370

Product name

Anti-CD62L/L-Selectin antibody

Immunogen

[Human CD62L/L-Selectin \(His Tag\) recombinant protein](#)

Specificity

Human CD62L / L-Selectin

Antibody description

Mouse monoclonal to CD62L/L-Selectin

Preparation

This antibody was produced from a hybridoma resulting from the fusion of a mouse myeloma with B cells obtained from a mouse immunized with purified, recombinant Human CD62L / L-Selectin (rh CD62L / L-Selectin; P14151-1; Met1-Asn332) and conjugated with PE under optimum conditions, the unreacted PE was removed.

Formulation

Aqueous solution containing 0.5% BSA and 0.09% sodium azide

Storage

This antibody is stable for 12 months from date of receipt when stored at 2°C-8°C. Protected from prolonged exposure to light. Do not freeze ! Sodium azide is toxic to cells and should be disposed of properly. Flush with large volumes of water during disposal.

Clonality

Monoclonal

Ig Type

Mouse IgG1

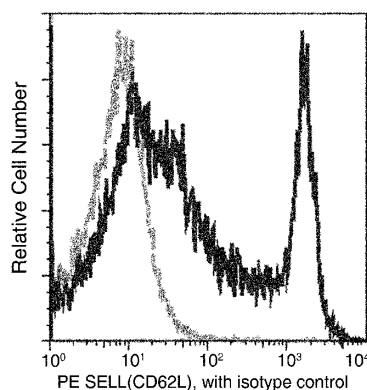
Applications

FCM

Dilutions

FCM

Validations



CD62L / L-Selectin Antibody, Mouse MAb, Flow Cytometry

Flow cytometric analysis of Human SELL(CD62L) expression on human whole blood lymphocytes. Cells were stained with PE-conjugated anti-Human SELL(CD62L). The fluorescence histograms were derived from gated events with the forward and side light-scatter characteristics of viable lymphocytes.